



## ORIGINAL ARTICLE

# Can static hyperinflation predict exercise capacity in COPD?



I. Ladeira<sup>a,b,\*</sup>, P. Oliveira<sup>c</sup>, J. Gomes<sup>a</sup>, R. Lima<sup>a</sup>, M. Guimarães<sup>a</sup>

<sup>a</sup> Department of Pulmonology; Centro Hospitalar de Vila Nova de Gaia e Espinho, EPE; Vila Nova de Gaia; Portugal

<sup>b</sup> Medicine Department, Faculdade de Medicina da Universidade do Porto; Porto; Portugal

<sup>c</sup> EPIUnit, Instituto de Saúde Pública, Instituto de Ciências Biomédicas Abel Salazar, Universidade do Porto; Porto; Portugal

Received 21 April 2021; accepted 2 August 2021

Available online 8 October 2021

## KEYWORDS

Hyperinflation;  
6MWT;  
CPET;  
PRO;  
QoL

## Abstract

**Introduction:** The diagnosis and severity assessment of COPD relies on spirometry, and in particular the FEV1. However, it has been proposed that hyperinflation and air-trapping are better predictors of exercise capacity and mortality than the FEV1.

**Research:** 

**question:** Does static hyperinflation predict exercise capacity?

**Methods:** We conducted an observational prospective study. Patients with COPD referred to the lung function laboratory were consecutively recruited. Patients with hyperinflation (the experimental group) were compared to patients without hyperinflation (the control group). The sample sizes were determined assuming an effect size of 0.5 and a power of 0.80.

**Results:** We recruited 124 participants, of whom 87% were male, the mean age was  $66.1 \pm 8.8$  years. 67% were symptomatic (GOLD B or D). Airflow limitation was moderate to severe in the majority of patients (median FEV1 47%, IQR 38-65%) and 43% of patients had static hyperinflation. The median 6MWD was 479 meters (404-510) and peak workload in CPET was 64 watts (46-88) with peak VO2 1.12 L/min, 0.89-1.31 L/min. Patients with lower FEV1, DLCO and IC/TLC and higher RV/TLC had reduced exercise capacity in both 6MWT and CPET, measured as lower distance, greater desaturation and  $\Delta$ Borg dyspnoea, and reduced workload, peak VO2 and peak VE and higher desaturation and ventilatory limitation (VE/MVV). An IC/TLC < 0.33 predicted reduced exercise performance (peak O2 <60%). Dyspnoea assessed by mMRC and QoL measured by CAT and CCQ were also worse in the hyperinflation in COPD patients.

**Conclusion:** In COPD patients, IC/TLC and RV/TLC are valuable predictors of exercise performance in both 6MWT and CPET and PRO.

© 2021 Sociedade Portuguesa de Pneumologia. Published by Elsevier España, S.L.U. This is an open access article under the CC BY-NC-ND license (<http://creativecommons.org/licenses/by-nc-nd/4.0/>).

\* Corresponding author at: Pulmonology Department CHVNG/E, Rua Conceição Fernandes, 4434-502 Vila Nova de Gaia, Portugal.  
E-mail address: ines.ladeira@chvng.min-saude.pt (I. Ladeira).

## Introduction

Chronic obstructive pulmonary disease (COPD) is a common, progressive and debilitating disease characterized by symptoms of breathlessness and reduced exercise capacity. Spirometry demonstrating post-bronchodilator airflow obstruction is mandatory to establish the diagnosis.<sup>1</sup> However, symptoms, especially dyspnoea and exercise intolerance, cannot be accurately predicted from the resting lung function parameters, including the severity of the airflow obstruction (FEV1), diffusion capacity for carbon monoxide (DLCO), or arterial blood gases.<sup>2,3</sup> In fact, the parameters usually used to define COPD and its severity predict symptoms and mortality poorly.<sup>4</sup> Thus, exercise capacity has emerged as an important prognostic indicator in COPD,<sup>5,6</sup> and exercise testing is increasingly used to evaluate patients with COPD. The six-minute walk test (6MWT) is the most commonly used exercise test, but cardiopulmonary exercise test (CPET) is considered the gold standard to study a patient's level of exercise limitation and assess its cause.<sup>7,8</sup> CPET indices, including peak oxygen uptake (VO<sub>2</sub> peak), ventilatory equivalents for carbon dioxide production (VE/VCO<sub>2</sub>) and arterial oxygen saturation (SpO<sub>2</sub>), provide important functional and prognostic information, and have proved to be better predictors of prognosis than lung function measurements obtained at rest.<sup>9–12</sup> Dyspnoea is the most common exercise-limiting symptom in advanced COPD, but leg discomfort is also frequently reported.<sup>13,14</sup> In COPD, the loss of lung elastic recoil and progressive expiratory airflow limitation promote air trapping, with increased functional residual capacity (FRC) and decreased inspiratory capacity (IC).<sup>15</sup> The inability to increase expiratory flow at the resting end-expiratory lung volume in the face of expiratory-flow limitation means that end-expiratory lung volume must increase if gas exchange is to be maintained near normal values - dynamic hyperinflation. Dynamic hyperinflation can be reliably measured from the inspiratory capacity manoeuvre.<sup>6</sup> The limitation of expiratory flow may also be influenced by inspiratory muscle strength<sup>16</sup> and the extent of the mechanical load imposed upon the muscles. A lower IC is observed when ventilation is taking place close to the total lung capacity, as is tends to occur with dynamic hyperinflation.<sup>6</sup> Recent studies have demonstrated that although static IC may be within the normal range in patients with mild airway obstruction (GOLD stage I), residual volume (RV) and functional residual capacity (FRC) may be elevated indicating early hyperinflation.<sup>17</sup> Hyperinflation can be assessed from the total lung capacity (TLC) and inspiratory capacity to total lung capacity ratio (IC/TLC), and air trapping measured by residual volume (RV) and residual volume to total lung capacity ratio (RV/TLC). These measurements are invaluable when classifying COPD and should be part of routine characterisation of these patients. Static hyperinflation and dynamic hyperinflation have been associated with the intensity of breathlessness and exercise intolerance in COPD patients.<sup>14,18–20</sup> There is also a correlation between decreased exercise capacity (defined by maximum load achieved on a cycle ergometer), a lower IC/TLC ratio and higher mortality, regardless of FEV1.<sup>21–23</sup>

Although peak VO<sub>2</sub> obtained from cardiopulmonary exercise testing (CPET) has been shown to be a predictor of mortality in COPD, CPET is not always readily available or cost

effective.<sup>24</sup> Thus, the 6MWT, a quick, reproducible, robust and cheaper exercise test, has been increasingly used to complement the functional evaluation of patients with COPD.<sup>25</sup> The variation in the distance covered on the 6MWT correlates with changes in spirometry<sup>26,27</sup> and predicts mortality in patients with COPD<sup>11,28,29</sup> better than FEV1 and regardless of accompanying comorbidities.<sup>15,29</sup>

The primary objective of this study was to investigate whether total lung capacity (TLC), inspiratory fraction (IC/TLC) and air-trapping (RV/TLC) might be useful in predicting maximal exercise capacity as measured with 6MWT and CPET in COPD patients, across all GOLD severity stages. Thus, the hypothesis under consideration is that the exercise capacity, measured by the mean values of 6MWT and CPET, are significantly different across the two groups (hyperinflated COPD patients and non-hyperinflated COPD patients).

## Material and methods

### Type of study and patient's selection

Single-centre, prospective study to evaluate the relationship between lung function, specifically hyperinflation and air-trapping, on exercise capacity in COPD patients.

The study protocol and all amendments were reviewed by the Ethics Committee (CHVNG – 199/2018). The study was conducted according to the ethical principles of the Declaration of Helsinki. Written informed consent was obtained from all patients before any assessment was performed.

Patients with stable chronic obstructive pulmonary disease (COPD) according to the Global Initiative for Chronic Obstructive Lung Disease (GOLD) 2017 strategy<sup>30</sup> with hyperinflation (defined as TLC > 120%) and air-trapping (defined as RV > 120% and RV/TLC > 120%)<sup>31</sup> and COPD patients without hyperinflation or air-trapping identified in the lung function laboratory of Centro Hospitalar Vila Nova de Gaia/Espinho (CHVNG/E) between October 2018 and March 2019 capable of completing exercise tests (cyclergometry – incremental protocol and 6MWT) and QOL questionnaires were included, irrespective of their age, smoking history and GOLD stage. All bronchodilators and corticosteroid medication were allowed in the study.

Exclusion criteria were a current documented diagnosis of asthma; a diagnosis of thyrotoxicosis; a history of myocardial infarction within 6 months; life-threatening cardiac arrhythmia; known active tuberculosis; patients with severe emphysema requiring endobronchial interventions within 6 months prior to screening; pregnancy.

### Data collection methods

With the patients' consent, data were collected by the authors (pulmonology physicians and cardiopulmonary technicians). Spirometry, lung volume assessment with plethysmography and 6MWT were performed by the pulmonary function testing laboratory cardiopulmonary technicians.

Patients performed pulmonary function testing according to ATS/ERS guidelines,<sup>32</sup> including routine post-bronchodilator spirometry<sup>33</sup> and lung volumes measurement with plethysmography.<sup>34</sup> Resting arterial oxygen pressure (pO<sub>2</sub>) and resting arterial carbon dioxide (pCO<sub>2</sub>) pressure were

measured in 2 mL blood drawn from the radial artery with a pre-heparinized syringe and immediately analysed using an ABL 90 flex plus blood gas analyser (Radiometer, Copenhagen, Denmark).

Modified Medical Research Council (MRC) dyspnoea scale, COPD Assessment Test (CAT), COPD Clinical Questionnaire (CCQ) were collected before respiratory testing.

The symptom-limited CPET followed ATS/ACCP standards.<sup>35,36</sup> Patients were subjected to symptom-limited incremental exercise with progressively increasing work rate (increment selected to maintain exercise for 8–10 min) until fatigue was reached. Patients were evaluated with breath-by-breath monitoring of cardiopulmonary variables [O<sub>2</sub> uptake (VO<sub>2</sub>), CO<sub>2</sub> output (VCO<sub>2</sub>), minute ventilation (VE), heart rate (HR)], assessment of perceptual responses (dyspnoea and leg discomfort measured by BORG scale<sup>37</sup>) and measurements such as exercise-related arterial oxygen desaturation and dynamic hyperinflation. Although there has been increasing interest in lung hyperinflation in COPD patients, no single standardized marker or criterion for hyperinflation has been established to date. In this study, dynamic hyperinflation was assessed by measuring IC repeatedly during CPET. Patients were required to take a deep inspiration, after normal expiration, at predetermined intervals of 2 min.<sup>12</sup> Ventilatory limitation at peak exercise was defined by a VE/maximum voluntary ventilation (MVV) above 85%.<sup>38,39</sup>

Exercise tolerance measured using the 6MWT followed the recommendations of the ATS.<sup>40–42</sup> We collected the maximum distance in meters and percentage of predicted value,<sup>43</sup> BORG scale<sup>37</sup> and oxygen desaturation. Oxygen desaturation was defined according to the Royal College of Physicians' guidelines as a  $\geq 4\%$  reduction between arterial oxygen saturation measured by pulse oximetry pre- and post-test ( $\Delta$  SpO<sub>2</sub>  $\geq 4\%$ ) and post-test SpO<sub>2</sub>  $< 90\%$ .<sup>11,44</sup> Each patient did only one 6MWT mainly due to staff and time constraints. Furthermore, according to ERS/ATS guidelines, the learning effect of a second test is especially important when the 6MWT is used to evaluate response to treatment or change over time, which were not aims of this study, and the importance of the learning effect of a second 6MWT for individuals who have previously performed multiple 6MWTs is difficult to establish, as few data are available. Use of oxygen during the test was standardised, if required. Participants were permitted to stop during the test if their symptoms became intolerable but were encouraged to resume the walking as soon as possible. The 6MWTs were monitored by a single operator who recorded the 6MWD (6-minute walk distance) at the same time. The distance walked in the test was reported in meters and as a percentage of predicted value using reference equations previously developed for healthy population.<sup>43</sup>

## Statistical analysis

A difference of 50m in the 6MWT between the control and the experimental group was considered clinically relevant<sup>45</sup> with a standard deviation of 95 meters, based on literature and experience of the hospital.<sup>43</sup> Thus, an approximate effect of 0.5 was expected. The sample sizes for the experimental group and the control group, according to hyperinflation and air-trapping, were determined assuming a

significance level of 0.05 and a power of 0.80, which implied 64 subjects in each group. The calculations were performed using G\*Power (t-tests: difference between two independent means).

Groups were compared using t-test, for quantitative variables, chi-square tests for categorical variables and ANOVA for several groups. The association between the outcomes and independent variables was studied through regression. In the event that the assumptions of the parametric tests were not observed, in particular normality and homogeneity of variances, non-parametric tests were used such as Mann-Whitney-Wilcoxon tests and Kruskal-Wallis. Correlation was evaluated by Pearson coefficient or the non-parametric Spearman rank. A significant level of  $p = 0.05$ . A cut-off value for IC/TLC was investigated through Receiver Operating Characteristic (ROC) curve. All analyses were carried out using SPSS 26.

## Results

132 patients were screened. 6 patients were excluded due to inability to perform exercise tests (5 patients had physical limitations and 1 patient had morbid obesity) and 2 patients did not show up on the day the exam was scheduled.

Table 1 shows the main clinical and functional characteristics of the 124 study participants at baseline. The patients were mostly male (87%) with a mean  $\pm$  standard deviation (SD) age of  $66.1 \pm 8.8$  years. The majority of patients were very symptomatic (67% GOLD B or D). Airflow limitation was moderate to severe in the majority of patients (median FEV<sub>1</sub> was 47% of predicted, interquartile range (IQR) 38–65%). Static hyperinflation and air-trapping was present in 53 patients (43%). A total of 8 patients (7%) were on continuous long-term oxygen therapy and 49 patients (40%) were enrolled in pulmonary rehabilitation programs.

The median 6MWD was 479 meters (IQR 404–510 m), with median  $\Delta$ SpO<sub>2</sub> -5% (-9–3%) and minimum spO<sub>2</sub>  $89 \pm 3\%$ . The median workload in CPET was 64 watts (IQR 46–88) with median peak VO<sub>2</sub> 1.12 L/min (IQR 0.89–1.31 L/min (15.5 mL/min/kg, IQR 13.6–17.8 mL/min/kg). Median O<sub>2</sub> pulse was 9.2 (IQR 7.7–10.7). Median peak VE was 40 L/min (IQR 31–49) and 89% of maximum voluntary ventilation (MVV) with 71% of patients presenting ventilatory limitation in CPET and 76% showing dynamic hyperinflation during CPET.

Lower FEV<sub>1</sub>, DLCO and KCO (%predicted) were associated with reduced exercise capacity in the 6MWT - lower distance, higher desaturation and  $\Delta$ Borg dyspnoea and in CPET - reduced workload, reduced peak VO<sub>2</sub>, higher desaturation during test and reduced peak VE as well as higher ventilatory limitation (VE/MVV %predicted) (Table 2).

Similarly, static hyperinflation (i.e., low IC/TLC) and air-trapping (i.e., high RV/TLC) were associated with reduced exercise capacity in the 6MWT - lower distance, higher desaturation and  $\Delta$ Borg dyspnoea and in CPET - reduced workload, reduced peak VO<sub>2</sub> and reduced peak VE with higher ventilatory limitation (Table 2). Hyperinflation was also associated with higher desaturation during CPET.

TLC (%predicted) was not correlated with any variable of 6MWT. Higher RV (%predicted) was associated with dyspnoea augmentation during 6MWT. In CPET, TLC correlated weakly

Table 1 Characteristics of study participants.		n
Sex - male, %	108	87.1
Age (years-old)		66.1±8.8
<b>Smoking history</b>		
Current smokers, %	37	30
Former smokers, %	79	64
Pack-year		46 (30-63)
BMI (Kg/m <sup>2</sup> )		26.5±4.3
Exacerbator, %	54	44
<b>GOLD</b>		
A, %	26	21
B, %	44	35
C, %	13	11
D, %	41	33
<b>QoL parameters</b>		
mMRC		1 (1-2)
mMRC ≥2, %	40	32
CAT		8 (5-12)
CAT ≥10, %	43	35
CCQ		1.2 (0.6-2.0)
CCQ ≥1, %	75	60
CCQ ≥1.5, %	52	42
<b>Inhaled medication</b>		
LAMA, %	112	90
LABA, %	116	94
ICS, %	70	578
<b>Pulmonary Rehabilitation, %</b>		
LTOT, %	8	7
OSA, %	13	11
Heart disease, %	21	17
<b>Arterial blood gas</b>		
pO <sub>2</sub> , mmHg		71±9
pCO <sub>2</sub> , mmHg		42±5
<b>Lung function</b>		
FEV1 L/%pred		1.26 (0.6-2.7) / 47 (38-65)
FVC L/%pred		2.9 (1.2-5.2) / 79 (68-92)
IC L/%pred		2.24 (1.8-2.6) / 88 (73-105)
TLC L/%pred		7.0 (6.4-7.7) / 116 (106-130)
IC/TLC		0.32 (0.26-0.39)
IC/TLC ≤ 0.25, %	27	22
0.25 < IC/TLC ≤ 0.35, %	54	43
IC/TLC > 0.35, %	43	35
RV L/%pred		3.81 (3.0-4.2) / 161 (137-194)
RV/TLC		0.56 (0.48-0.63)
DLCO %pred		57 (46-73)
KCO %pred		70 (56-89)
<b>6MWT</b>		
6MWD, m		479 (404-510)
ΔSpO <sub>2</sub>		-5 (-9-3)
SpO <sub>2</sub> min		89±3
ΔBorg dyspnoea		2 (0-3)
ΔBorg fatigue		1 (0-3)

Table 1 (Continued)		n
<b>CPET</b>		
Peak Workload, W		64 (46-88)
Peak VO <sub>2</sub> L/min, mL/min/kg, %		1.10 (0.89-1.31), 15.5 (13.6-17.8), 65 (56-74)
ΔSpO <sub>2</sub>		-2 (-6- -1)
AT, %peakVO <sub>2</sub>		47 (42-54)
VE/VCO <sub>2</sub> @AT		37 (34-42)
Peak O <sub>2</sub> /HR		9.2 (7.7-10.7)
Peak HR, %pred		79 (71-86)
Peak VE, L/min, %MVV		40 (31-49), 89 (71-102)
Ventilatory limitation, %	88	71
Dynamic hyperinflation, %	94	76

Data expressed as mean ± SD or median (IQR) and n/% for qualitative variables.

BMI: body mass index; GOLD: Global Initiative for Chronic Obstructive Lung Disease; QoL: quality of life; mMRC: modified medical respiratory council dyspnoea scale; CAT: COPD assessment test; CCQ: Clinical COPD Questionnaire, LABA: long acting beta agonist; LAMA: long acting muscarinic antagonist; ICS: inhaled corticosteroid; LTOT: long term oxygen therapy; OSA: Obstructive sleep apnoea; PaO<sub>2</sub>: arterial pressure of oxygen; PaCO<sub>2</sub>: arterial pressure of carbon dioxide; FEV<sub>1</sub>: Forced Expiratory Flow in 1sec; FVC: Forced Vital capacity; IC: inspiratory capacity; TLC: total lung capacity; RV: residual volume; DLCO: lung diffusion capacity for carbon monoxide; KCO: carbon monoxide transfer coefficient; 6MWT: 6-minute walk test; 6MWD: 6-minute walk distance; m: metre; %:percentage; SpO<sub>2</sub>: pulse oxygen saturation; CPET: Cardiopulmonary exercise test; peak W: peak incremental cycle work rate; peak VO<sub>2</sub>: peak oxygen uptake; AT: Anaerobic threshold; VE/VCO<sub>2</sub>: minute ventilation/carbon dioxide production; peak O<sub>2</sub>/HR: peak oxygen pulse; VE: minute ventilation; MVV: maximal voluntary ventilation; HR: heart rate; bpm: beats per minute; W: watt; L: liters, %pred: percentage predicted, ml: millilitre; min: minute; n: number; min: minimum; mmHg: millimetre of mercury.

with ventilatory limitation as well as RV, but higher RV was also associated with lower workload and reduced peak VO<sub>2</sub>.

A reduced peak O<sub>2</sub> (<60% predicted in CPET) and thus a greater disability in these COPD patients was associated with IC/TLC < 0.33 (Fig. 1).

When comparing the group of COPD patients with hyperinflation and air-trapping with the non-hyperinflated group, we found lower FEV<sub>1</sub> (43% (31-54) versus 50% (39-69)), lower mean arterial oxygen (pO<sub>2</sub> 68±9 mmHg versus 72±9 mmHg) and more severe static hyperinflation (IC/TLC ≤ 0.25 in 32% of patients versus 14%) - Table 3. Patients with hyperinflation and air-trapping had more ventilatory limitation in CPET (87% versus 59%), although no difference was found in exercise performance either in CPET or 6MWT between groups.

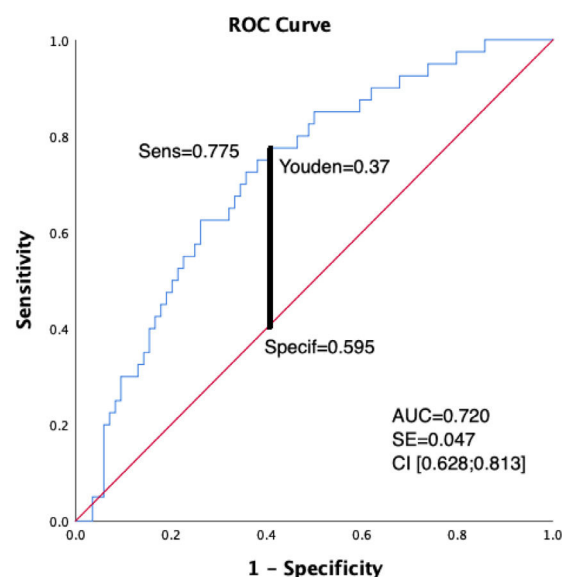
With regards to patient-reported outcomes (PRO), mMRC and CCQ were significantly higher in patients with hyperinflation ( $p < 0.01$  and  $p = 0.03$ ) and no difference in CAT was found between groups (Table 3), although a correlation was found between CAT and air-trapping measured by RV% and



**Table 2** Correlation of functional variables with exercise capacity (significant correlations on bold, \*  $p < 0.05$ , \*\*  $p < 0.01$ ).

	6MWT dist. (m)	$\Delta$ SpO2 (%)	$\Delta$ Borg dyspnoea	$\Delta$ Borg fatigue	CPET W max (watts)	Peak VO2 (mL/min)	Peak VO2 (%)	Peak VO2/kg (mL/min/kg)	$\Delta$ SpO2 (%)	Peak VO2/HR	HR (%)	Peak VE	VE/MVV
FEV1 %	<b>.239**</b>	<b>-.300**</b>	<b>-.339**</b>	-0,106	<b>.430**</b>	<b>.373**</b>	<b>.517**</b>	<b>.205*</b>	<b>-.272**</b>	<b>.297**</b>	<b>.256**</b>	<b>.669**</b>	<b>-.533**</b>
DLCO %	<b>.360**</b>	<b>-.447**</b>	<b>-.428**</b>	-0,094	<b>.481**</b>	<b>.578**</b>	<b>.551**</b>	<b>.314**</b>	<b>-.372**</b>	<b>.448**</b>	<b>.270**</b>	<b>.356**</b>	<b>-.201*</b>
KCO %	<b>.288**</b>	<b>-.332**</b>	<b>-.330**</b>	-0,055	<b>.313**</b>	<b>.441**</b>	<b>.379**</b>	<b>.217*</b>	<b>-.316**</b>	<b>.359**</b>	<b>.217*</b>	<b>0,104</b>	<b>-.179*</b>
TLC %	-0,114	0,027	0,151	-0,059	-0,145	-0,167	-0,053	-0,081	-0,020	-0,144	-0,193*	-0,073	<b>.288**</b>
RV %	-0,116	0,159	<b>.287**</b>	0,012	<b>-.234**</b>	<b>-.214*</b>	<b>-.244**</b>	-0,116	0,096	-0,164	<b>-.275**</b>	<b>-.319**</b>	<b>.383**</b>
RV/TLC	<b>-.199*</b>	<b>0,160</b>	<b>.309**</b>	0,136	<b>-.475**</b>	<b>-.406**</b>	<b>-.306**</b>	<b>-.223*</b>	0,087	<b>-.246**</b>	<b>-.313**</b>	<b>-.630**</b>	<b>.431**</b>
IC/TLC	<b>.207*</b>	<b>-.300**</b>	<b>-.357**</b>	-0,103	<b>.501**</b>	<b>.447**</b>	<b>.381**</b>	<b>.196*</b>	<b>-.261**</b>	<b>.317**</b>	<b>.266**</b>	<b>.626**</b>	<b>-.441**</b>

FEV1: Forced Expiratory Flow in 1sec; FVC: Forced Vital capacity; IC: inspiratory capacity; TLC: total lung capacity; DLCO: lung diffusion capacity for carbon monoxide; KCO: CO transfer coefficient; 6MWT: 6-min walk test; m: metre; %-percentage; SpO2: pulse oxygen saturation; CPET: Cardiopulmonary exercise test; peak W: peak incremental cycle work rate; peak VO2: peak oxygen uptake; AT: Anaerobic threshold; VE/VCO2: minute ventilation/carbon dioxide production; peak O2/HR: peak O2 pulse; VE: minute ventilation; MVV: maximal voluntary ventilation; HR: heart rate; bpm: beats per minute; W: watt; L: litres; %pred: percentage predicted, ml: millilitre; min: minute; n: number; mmHg: millimetre of mercury.



**Figure 1** Receiver operating characteristic curve (ROC) analysis of IC/TLC for prediction of impaired exercise capacity measured in CPET (peak VO2 < 60%). With the cut off value of 0.33 for the IC/TLC, the area under the curve was 0.720 (95% confidence interval, 0.628 to 0.813;  $p < 0.005$ ) with the sensitivity of 78% and specificity of 60%.

RV/TLC (0.232 and 0.248,  $p < 0.01$ ) (Table 4); 43% of the hyperinflated patients had mMRC  $\geq 2$  versus 24% in non-hyperinflated patients ( $p = 0.02$ ). Regarding CCQ, 53% of hyperinflated patients had CCQ  $\geq 1.5$  and only 34% of non-hyperinflated COPD achieved that cut-off ( $p = 0.03$ ).

## Discussion

Our study found a significant relation between hyperinflation, measured by IC/TLC, and exercise capacity in COPD patients GOLD A-D using 6MWT and CPET.

Increased lung hyperinflation predicted a lower distance walked in the 6MWT as previously suggested,<sup>46</sup> but also a higher  $\Delta$ SpO2 and worse dyspnoea, measured by the Borg scale, during the test. Ramon et al<sup>36</sup> in 2016, also found that IC/TLC predicted 6MWD decline in moderate-to-severe clinically stable patients with COPD. In our study, IC/TLC ratio had a better capacity to predict exercise capacity than TLC alone or TLC and RV combined. Contrary to our results, Perez et al<sup>47</sup> did not show an association between RV and RV/TLC and 6MWD, which the authors attributed to a confounding effect of FEV1 and age. Freitas et al<sup>15</sup> published data supporting IC as the greatest determinant of the distance covered on the 6MWT but this is not seen in our study.

Considering CPET, lower IC/TLC was also related to reduced workload, reduced VO2 peak, higher desaturation during test, reduced peak VE and ventilatory limitation as previously suggested by Albuquerque et al<sup>18</sup> in COPD patients GOLD stages II-III (reduced VO2 peak in CPET). We were able to identify an IC/TLC cut-off associated with more severe exercise capacity impairment, which has not been previously reported as far as we know. This has the potential to be a useful tool in clinical practice whereby

**Table 3** Characteristics of COPD patients according to the presence of hyperinflation and air-trapping.

	Non-hyperinflators (n=71)	Hyperinflators (n=53)	p-value
<b>Sex - male, n/%</b>	65/92	43/81	0.108
<b>Age (years-old)</b>	66.9±8.7	65.2±8.9	0.281
<b>Smoking history</b>			0.692
Current smokers, n/%	19/27	18/34	
Former smokers, n/%	47/66	32/60	
UMA	44 (25-59)	45 (30-62)	0.680
<b>BMI, Kg/m<sup>2</sup></b>	26±4	26±4	0.971
<b>Exacerbator, n/%</b>	31/44	23/43	0.976
<b>GOLD</b>			
A, n/%	17/24	9 /17	0.544
B, n/%	24/34	20/38	
C, n/%	9/13	4/8	
D, n/%	21/30	20/38	
<b>QoL parameters</b>			
mMRC	1 (0-1)	1 (1-2)	<b>0.005</b>
mMRC ≥2, n/%	17/24	23/43	<b>0.022</b>
CAT	7 (5-11)	8 (6-13)	0.148
CAT ≥10, %	23/32	20/38	0.536
CCQ	1.1 (0.6-1.7)	1.6 (0.9-2.2)	<b>0.026</b>
CCQ ≥1, %	38/54	37/70	0.066
CCQ ≥1.5, %	24/34	28/53	<b>0.034</b>
<b>Inhaled medication</b>			
LAMA, n/%	61/86	51/96	0.069
LABA, n/%	65/92	51/96	0.465
ICS, n/%	40/56	30/57	1.000
<b>Pulmonary Rehabilitation, n (%)</b>	25/35	24/45	0.271
LTOT, n (%)	2/3	6/11	0.072
OSA, n (%)	6/9	7/13	0.555
<b>Heart disease, n (%)</b>	14/20	7/13	0.469
<b>Arterial blood gas</b>			
pO <sub>2</sub> , mmHg	72±9	68±9	<b>0.016</b>
pCO <sub>2</sub> , mmHg	41±4	42±6	0.355
<b>Lung function</b>			
FEV <sub>1</sub> , L	1.37 (1.13-1.81)	1.10 (0.85-1.62)	<b>0.002</b>
FVC, L	2.92 (02.43-3.38)	2.74 2.34-3.39)	0.633
IC, L	2.25 (1.87-2.55)	2.24 (1.70-2.72)	0.768
TLC, L	6.71 (6.21-7.05)	7.81 (7.11-8.46)	
IC/TLC	0.34 (0.28-0.40)	0.29 (0.24-0.37)	<b>0.009</b>
IC/TLC ≤ 0.25, n (%)	10 (14)	17 (32)	<b>0.052</b>
0.25 < IC/TLC ≤ 0.35, n (%)	33 (46)	21 (40)	
IC/TLC >0.35, n (%)	28 (39)	15(28)	
RV, L	3.47 (2.93-3.93)	4.65 (3.84-5.27)	
RV/TLC	0.52 (0.47-0.58)	0.61 (0.52-0.66)	
DL <sub>CO</sub> , %pred	58 (47-74)	57 (46-73)	0.996
K <sub>CO</sub> , %pred	73 (60-92)	68 (54-83)	0.065
<b>6MWT</b>			
6MWD, m	480 (409-518)	470 (386-509)	0.406
ΔSpO <sub>2</sub>	-5 (-9 - -2)	-5 (-9 - -3)	0.945
ΔBorg dyspnoea	1 (0-3)	2 (0-3)	0.172
ΔBorg fatigue	1 (0-3)	1 (0-3)	0.875
<b>CPET</b>			
Peak Workload	64 (47-92)	60 (43-82)	0.531
Peak VO <sub>2</sub> (L/min)	1.11 (0.92-1.33)	1.10 (0.97-1.30)	0.403
Peak VO <sub>2</sub> (mL/min/kg)	15.6 (13.2-18.3)	15.2 (13.7-17.4)	0.745
ΔSpO <sub>2</sub>	-2 (-6- -1)	-2 (-6-0)	0.930
AT measured, n/%	52/73	41/77	0.387
AT, %VO <sub>2</sub>	47 (43-53)	47 (41-57)	0.696
VE/VCO <sub>2</sub> @AT	37 (33-41)	38 (34-43)	0.239

**Table 3** (Continued)

	Non-hyperinflators (n=71)	Hyperinflators (n=53)	p-value
Peak O <sub>2</sub> /HR	9.3 (7.8-11.0)	9.0 (7.7-10.5)	0.539
Peak HR, %pred	80 (72-88)	76 (69-84)	0.067
Peak VE, L/min	40 (32-48)	38 (31-51)	0.534
Peak VE, %MVV	83 (68-96)	95 (85-104)	<b>0.001</b>
Ventilatory limitation, n/%	42/59	46/87	<b>0.001</b>
Dynamic hyperinflation, n/%	52/73	42/79	0.527

Data expressed as mean  $\pm$  SD or median (IQR) and n/% for qualitative variables.

BMI: body mass index; GOLD: Global Initiative for Chronic Obstructive Lung Disease; QoL: quality of life; mMRC: modified medical respiratory council dyspnoea scale; CAT: COPD assessment test; CCQ: Clinical COPD Questionnaire, LABA: long acting beta agonist; LAMA: long acting muscarinic antagonist; ICS: inhaled corticosteroid; LTOT: long term oxygen therapy; OSA: Obstructive sleep apnoea; PaO<sub>2</sub>: arterial pressure of oxygen; PaCO<sub>2</sub>: arterial pressure of carbon dioxide; FEV<sub>1</sub>: Forced Expiratory Flow in 1sec; FVC: Forced Vital capacity; IC: inspiratory capacity; TLC: total lung capacity; RV: residual volume; DLCO: lung diffusion capacity for carbon monoxide; KCO: carbon monoxide transfer coefficient; 6MWT: 6-min walk test; 6MWD: 6-minute walk distance; m: metre; %:percentage; SpO<sub>2</sub>: pulse oxygen saturation; CPET: Cardiopulmonary exercise test; peak W: peak incremental cycle work rate; peak VO<sub>2</sub>: peak oxygen uptake; AT: Anaerobic threshold; VE/VCO<sub>2</sub>: minute ventilation/carbon dioxide production; peak O<sub>2</sub>/HR: peak oxygen pulse; VE: minute ventilation; MVV: maximal voluntary ventilation; HR: heart rate; bpm: beats per minute; W: watt; L: liters, %pred: percentage predicted, ml: millilitre; min: minute; n: number; min: minimum; mmHg: millimetre of mercury.

static lung function measurements can be used to predict higher disability in COPD patients. Increased hyperinflation and air-trapping, measured by lower IC/TLC and higher RV/TLC, was also associated with worse O<sub>2</sub> pulse (VO<sub>2</sub>/HR) suggesting that cardiac function and associated exercise tolerance can be influenced by hyperinflation. This was previously suggested in the NETT study, when a decrease in hyperinflation as measured by the RV/TLC after Lung Volume Reduction Surgery (LVRS) and in some patients after medical therapy, was associated with improved O<sub>2</sub> pulse (VO<sub>2</sub>/HR) 6 months following randomization.<sup>48</sup> When comparing hyperinflators and non-hyperinflators, the main limitation to the exercise capacity found in CPET was ventilatory, with a significantly more patients in the hyperinflator group who exhausted the ventilatory reserve. Hyperinflation was also associated with more symptoms and a worse QoL, using mMRC and CCQ, and air-trapping predicted worse CAT scores. Symptoms and reduced QoL were previously associated with FEV<sub>1</sub> and exercise capacity measure with 6MWD<sup>49,50</sup> but our study also demonstrates the impact of hyperinflation and air-trapping on symptoms and worse QoL.

To the best of our knowledge, this is the first prospective study to evaluate the impact of hyperinflation on exercise capacity using CPET and 6MWT simultaneously across all severity stages of COPD. There is no consensus on the ideal method to define and measure static hyperinflation. Both TLC and IC/TLC are considered in several papers, but according to our study, IC/TLC ratio is a better predictor of exercise capacity than TLC alone, or TLC and RV combined. This new data can motivate clinicians to look at lung volumes, especially the IC/TLC ratio, when characterizing and assessing severity in COPD patients. Given our results, reduction in hyperinflation could be considered as a treatment goal in order to improve a COPD patient's exercise capacity and ability to perform daily activities. LABAs and LAMAs have been shown to impact on static IC rather than a modification of dynamic hyperinflation during exercise,<sup>51</sup> and this may correlate better with their beneficial effect on exercise tolerance than their impact on FEV<sub>1</sub>. Our study did not aim to compare the effect of FEV<sub>1</sub> versus hyperinflation

on exercise capacity but future research, with sample enlargement, might enrich our knowledge on the utility of lung volumes assessment. IC/TLC may be a better index of impact of COPD on exercise than either FEV<sub>1</sub> or other measures of hyperinflation. Also, we did not find major differences between hyperinflators and non-hyperinflators with regards to peak workload and peak VO<sub>2</sub> in CPET, and this may be explained by the sensitive definition of hyperinflation adopted (TLC > 120%, RV > 120%<sup>31</sup>). We would probably find a greater effect with a higher cut off (e.g., 140%) which might be more clinically relevant. The continuation of our study, with sample increase and subgroup analysis may consolidate our findings.

This prospective study was based on a large set of patients with clinically stable COPD in GOLD stages A-D. The broad inclusion criteria, the sample size and wide spectrum of disease severity are clear strengths of our study, and the presented data can be considered as representative of a 'real world' setting of patients referred for lung function assessment. We included non-smokers (6%) as well as smokers or former smoker patients, 40% of patients were enrolled in pulmonary rehabilitation (PR) and 17% patients had co-existent cardiac disease (6 patients had cardiac arrhythmias, 2 had valvular disease, 3 had ischemic heart disease and 10 had heart failure). PR may have contributed to the mean distance walked in the 6MWT and VO<sub>2</sub> and peak workload in CPET of our study, despite the severity of our patients, as it is known to improve exercise performance with CPET and 6MWT (mean improvements of 11% peak in VO<sub>2</sub> and 6.8 w in peak workload and 44 m, respectively<sup>12</sup>). However, both groups included patients on pulmonary rehabilitation programs and no significative difference was found between them. Clearly heart disease can have an impact on exercise performance,<sup>8</sup> but the proportion of patients with heart disease was similar in the two groups (19,7% in the non-hyperinflators group and 13,2% in the hyperinflators group,  $p = 0,079$ ).

One limitation of the present study is the lack of duplicate 6MWT, though the majority of the included patients had previously performed the test (89%), minimizing the

**Table 4** Correlation between symptoms and QoL scales and respiratory function parameters (significant correlations on bold, \*  $p < 0.05$ , \*\*  $p < 0.01$ ).

	FEV1 (L)	FEV1 (%)	FVC (L)	FVC (%)	IC (L)	IC (%)	TLC (L)	TLC (%)	RV (L)	RV (%)	RV/TLC	IC/TLC	DLCO %	KCO %
CAT	-0.175	-0.127	<b>-.212*</b>	-0.166	<b>-.179*</b>	-0.058	-0.108	0.092	0.059	<b>.211*</b>	<b>.199*</b>	-0.137	<b>-.208*</b>	-0.138
mMRC	<b>-.180*</b>	-0.143	-0.126	-0.071	-0.153	-0.070	0.064	<b>.196*</b>	0.168	<b>.223*</b>	0.173	<b>-.184*</b>	<b>-.330**</b>	<b>-.289**</b>
CCQ	<b>-.235**</b>	-0.161	<b>-.277**</b>	<b>-.207*</b>	<b>-.239**</b>	-0.109	-0.056	0.153	0.146	<b>.276**</b>	<b>.279**</b>	<b>-.224*</b>	<b>-.289**</b>	<b>-.213*</b>

mMRC: modified medical respiratory council dyspnoea scale; CAT: COPD assessment test; CCQ: Clinical COPD Questionnaire; FEV1: Forced Expiratory Flow in 1sec; FVC: Forced Vital capacity; IC: inspiratory capacity; TLC: total lung capacity; RV: residual volume; DLCO: lung diffusion capacity for carbon monoxide; KCO: CO transfer coefficient; L: liters, %pred: percentage predicted.

impact of a potential lack of the learning effect. Also, according to the latest ATS/ERS technical standards, a second test is currently mainly recommended for intervention efficacy assessment and comparison over time.<sup>42</sup>

## Conclusion

We found a significant relationship between hyperinflation in COPD patients GOLD A-D and exercise capacity using both 6MWT (distance walked and  $\Delta$ SpO<sub>2</sub>) and CPET (workload, VO<sub>2</sub> peak, desaturation, peak VE, ventilatory limitation and O<sub>2</sub> pulse). The IC/TLC ratio was better at predicting exercise capacity measured by both tests than TLC and RV. Hyperinflation and air-trapping were also associated with more symptoms (mMRC) and worse QoL (CCQ and CAT).

Further research can better examine the impact of hyperinflation and air-trapping reduction (through PR, pharmacological interventions or surgery) in QoL and the associations between these PRO and exercise test outcomes.

## Author contributions

The listed authors attest that they made substantial contributions to the conception and design of the study, acquisition, analysis and interpretation of the data; drafting the article or revising it critically for important intellectual content, final approval of the version to be submitted for revision. All authors had full access to all the data in the study and accept responsibility for the submission of this work.

## Funding / support

This research did not receive any specific grant from funding agencies in the public, commercial, or not-for-profit sectors.

## Declaration of competing interest

None to declare.

## Acknowledgements

We would like to thank Dr. Thomas Whitehead, Pulmonologist in Devon, UK, for providing language help and all the personnel from the lab for their professional assistance with data collection.

## References

1. Singh D, Agusti A, Anzueto A, et al. Global Strategy for the Diagnosis, Management, and Prevention of Chronic Obstructive Lung Disease: the GOLD science committee report 2019. *Eur Respir J*. 2019;53(5).
2. Kohli P, Pinto-Plata V, Divo M, et al. Functional capacity, health status, and inflammatory biomarker profile in a cohort of



- patients with chronic obstructive pulmonary disease. *J Cardiopulm Rehabil Prev.* 2015;35(5):348–55.
3. Cooper CB. The connection between chronic obstructive pulmonary disease symptoms and hyperinflation and its impact on exercise and function. *Am J Med.* 2006;119(10 Suppl 1):21–31.
  4. Smith LE, Moore E, Ali I, Smeeth L, Stone P, Quint JK. Prognostic variables and scores identifying the end of life in COPD: a systematic review. *Int J Chron Obstruct Pulmon Dis.* 2017;12:2239–56.
  5. Fotheringham I, Meakin G, Puneekar YS, Riley JH, Cockle SM, Singh SJ. Comparison of laboratory- and field-based exercise tests for COPD: a systematic review. *Int J Chron Obstruct Pulmon Dis.* 2015;10:625–43.
  6. Calverley PM. Dynamic hyperinflation: is it worth measuring? *Proc Am Thorac Soc.* 2006;3(3):239–44.
  7. Ferrazza AM, Martolini D, Valli G, Palange P. Cardiopulmonary exercise testing in the functional and prognostic evaluation of patients with pulmonary diseases. *Respiration.* 2009;77(1):3–17.
  8. Laveneziana P, Di Paolo M, Palange P. The clinical value of cardiopulmonary exercise testing in the modern era. *Eur Resp Rev.* 2021;30(159):200187.
  9. Oga T, Nishimura K, Tsukino M, Sato S, Hajiro T. Analysis of the factors related to mortality in chronic obstructive pulmonary disease: role of exercise capacity and health status. *Am J Respir Crit Care Med.* 2003;167(4):544–9.
  10. Hiraga T, Maekura R, Okuda Y, et al. Prognostic predictors for survival in patients with COPD using cardiopulmonary exercise testing. *Clin Physiol Funct Imaging.* 2003;23(6):324–31.
  11. Casanova C, Cote C, Marin JM. Distance and oxygen desaturation during the 6-min walk test as predictors of long-term mortality in patients with COPD. *Chest.* 2008;134(4):746–52.
  12. Puente-Maestu L, Palange P, Casaburi R, et al. Use of exercise testing in the evaluation of interventional efficacy: an official ERS statement. *Eur Respir J.* 2016;47(2):429–60.
  13. O'Donnell DE, McGuire M, Samis L, Webb KA. The impact of exercise reconditioning on breathlessness in severe chronic airflow limitation. *Am J Respir Crit Care Med.* 1995;152(6):2005–13.
  14. O'Donnell DE, Webb KA. Exertional breathlessness in patients with chronic airflow limitation. *Am Rev Respir Dis.* 1993;148(5):1351–7.
  15. Freitas CG, Pereira CA, Viegas CA. Inspiratory capacity, exercise limitation, markers of severity, and prognostic factors in chronic obstructive pulmonary disease. *J Bras Pneumol.* 2007;33(4):389–96.
  16. Petrovic M, Reiter M, Zipko H, Pohl W, Wanke T. Effects of inspiratory muscle training on dynamic hyperinflation in patients with COPD. *Int J Chron Obstruct Pulmon Dis.* 2012;7:797–805.
  17. Park J, Lee CH, Lee YJ, et al. Longitudinal changes in lung hyperinflation in COPD. *Int J Chron Obstruct Pulmon Dis.* 2017;12:501–8.
  18. Albuquerque AL, Nery LE, Villaça DS, et al. Inspiratory fraction and exercise impairment in COPD patients GOLD stages II-III. *Eur Respir J.* 2006;28(5):939–44.
  19. O'Donnell DE, Revill SM, Webb KA. Dynamic hyperinflation and exercise intolerance in chronic obstructive pulmonary disease. *Am J Respir Crit Care Med.* 2001;164(5):770–7.
  20. Marin JM, Carrizo SJ, Gascon M, Sanchez A, Gallego B, Celli BR. Inspiratory capacity, dynamic hyperinflation, breathlessness, and exercise performance during the 6-minute-walk test in chronic obstructive pulmonary disease. *Am J Respir Crit Care Med.* 2001;163(6):1395–9.
  21. Casanova C, Cote C, de Torres JP, et al. Inspiratory-to-total lung capacity ratio predicts mortality in patients with chronic obstructive pulmonary disease. *Am J Respir Crit Care Med.* 2005;171(6):591–7.
  22. Martinez FJ, Foster G, Curtis JL, et al. Predictors of mortality in patients with emphysema and severe airflow obstruction. *Am J Respir Crit Care Med.* 2006;173(12):1326–34.
  23. Aalstad LT, Hardie JA, Espehaug B, et al. Lung hyperinflation and functional exercise capacity in patients with COPD—a three-year longitudinal study. *BMC Pulm Med.* 2018;18(1):1–9.
  24. Cote CG, Pinto-Plata V, Kasprzyk K, Dordelly LJ, Celli BR. The 6-min walk distance, peak oxygen uptake, and mortality in COPD. *Chest.* 2007;132(6):1778–85.
  25. Singh SJ, Puhan MA, Andrianopoulos V, et al. An official systematic review of the European Respiratory Society/American Thoracic Society: measurement properties of field walking tests in chronic respiratory disease. *Eur Respir J.* 2014;44(6):1447–78.
  26. Agrawal MB, Awad NT. Correlation between six minute walk test and spirometry in chronic pulmonary disease. *J Clin Diagn Res.* 2015;9(8):Oc01–4.
  27. Awotidebe TO, Awopeju OF, Bisiriyu LA, et al. Relationships between respiratory parameters, exercise capacity and psychosocial factors in people with chronic obstructive pulmonary disease. *Ann Phys Rehabil Med.* 2017;60(6):387–92.
  28. Pinto-Plata VM, Cote C, Cabral H, Taylor J, Celli BR. The 6-min walk distance: change over time and value as a predictor of survival in severe COPD. *Eur Respir J.* 2004;23(1):28–33.
  29. Karanth MS, Awad NT. Six minute walk test: a tool for predicting mortality in chronic pulmonary diseases. *J Clin Diagn Res.* 2017;11(4):Oc34–oc8.
  30. Vogelmeier CF, Criner GJ, Martinez FJ, et al. Global strategy for the diagnosis, management, and prevention of chronic obstructive lung disease 2017 Report. GOLD executive summary. *Am J Respir Crit Care Med.* 2017;195(5):557–82.
  31. O'Donnell DE, Webb KA, Neder JA. Lung hyperinflation in COPD: applying physiology to clinical practice. *COPD Res Pract.* 2015;1(1):4.
  32. Culver BH, Graham BL, Coates AL, et al. Recommendations for a Standardized Pulmonary Function Report. An Official American Thoracic Society Technical Statement. *Am J Respir Crit Care Med.* 2017;196(11):1463–72.
  33. Miller MR, Hankinson J, Brusasco V, et al. Standardisation of spirometry. *Eur Respir J.* 2005;26(2):319–38.
  34. Stocks J, Godfrey S, Beardmore C, Bar-Yishay E, Castile R. Plethysmographic measurements of lung volume and airway resistance. ERS/ATS Task Force on Standards for Infant Respiratory Function Testing. European Respiratory Society/American Thoracic Society. *Eur Respir J.* 2001;17(2):302–12.
  35. American Thoracic S.. ATS/ACCP statement on cardiopulmonary exercise testing. *Am J Respir Crit Care Med.* 2003;167(2):211.
  36. Weisman IM. Erratum: ATS/ACCP statement on cardiopulmonary exercise testing. *Am J Respir Crit Care Med.* 2003;167(10):1451–2.
  37. Borg GA. Psychophysical bases of perceived exertion. *Med Sci Sports Exerc.* 1982;14(5):377–81.
  38. Sue DY, Hansen JE. Normal values in adults during exercise testing. *Clin Chest Med.* 1984;5(1):89–98.
  39. Palange P, Ward SA, Carlsen KH, et al. Recommendations on the use of exercise testing in clinical practice. *Eur Respir J.* 2007;29(1):185–209.
  40. ATS statement: guidelines for the six-minute walk test. *Am J Respir Crit Care Med.* 2002;166(1):111–7.
  41. Erratum: ATS statement: guidelines for the six-minute walk test. *Am J Respir Crit Care Med.* 2016;193(10):1185.
  42. Holland AE, Spruit MA, Troosters T, et al. An official European Respiratory Society/American Thoracic Society technical standard: field walking tests in chronic respiratory disease. *Eur Respir J.* 2014;44(6):1428–46.
  43. Oliveira MJ, Marçôa R, Moutinho J, et al. Reference equations for the 6-minute walk distance in healthy Portuguese subjects 18-70 years old. *Pulmonology.* 2019;25(2):83–9.

44. Wedzicha JA. Domiciliary oxygen therapy services: clinical guidelines and advice for prescribers. Summary of a report of the Royal College of Physicians. *J R Coll Physicians Lond.* 1999;33(5):445–7.
45. Laviolette L, Bourbeau J, Bernard S, et al. Assessing the impact of pulmonary rehabilitation on functional status in COPD. *Thorax.* 2008;63(2):115–21.
46. Aalstad LT, Hardie JA, Espehaug B, et al. Lung hyperinflation and functional exercise capacity in patients with COPD - a three-year longitudinal study. *BMC Pulm Med.* 2018;18(1):187.
47. Perez T, Deslee G, Burgel PR, et al. Predictors in routine practice of 6-min walking distance and oxygen desaturation in patients with COPD: impact of comorbidities. *Int J Chron Obstruct Pulmon Dis.* 2019;14:1399–410.
48. Come CE, Divo MJ, San Jose Estepar R, et al. Lung deflation and oxygen pulse in COPD: results from the NETT randomized trial. *Respir Med.* 2012;106(1):109–19.
49. Jo YS, Park S, Kim DK, Yoo CG, Lee CH. The cutoff point of clinical chronic obstructive pulmonary disease questionnaire for more symptomatic patients. *BMC Pulm Med.* 2018;18(1):38.
50. Puneekar YS, Riley JH, Lloyd E, Driessen M, Singh SJ. Systematic review of the association between exercise tests and patient-reported outcomes in patients with chronic obstructive pulmonary disease. *Int J Chron Obstruct Pulmon Dis.* 2017;12:2487.
51. Di Marco F, Sotgiu G, Santus P, et al. Long-acting bronchodilators improve exercise capacity in COPD patients: a systematic review and meta-analysis. *Respir Res.* 2018;19(1):18.