



ORIGINAL ARTICLE

Correlation between parameters of volumetric capnography and spirometry during a submaximal exercise protocol on a treadmill in patients with cystic fibrosis and healthy controls



P.L.F. Parazzi^{a,*}, F.A.L. Marson^{a,b,*}, M.A.G.O. Ribeiro^a, C.I.S. Schivinski^c, J.D. Ribeiro^a

^a Department of Pediatrics, Faculty of Medical Sciences, University of Campinas, Tessália Vieira de Camargo, 126, Cidade Universitária "Zeferino Vaz", Postal Code: 13083-887 Campinas, São Paulo, Brazil

^b Department of Medical Genetics, Faculty of Medical Sciences, University of Campinas, Tessália Vieira de Camargo, 126, Cidade Universitária "Zeferino Vaz", Postal Code: 13083-887 Campinas, São Paulo, Brazil

^c Center of Physical Education and Sports, State University of Santa Catarina, Postal Code: 88080-350 Coqueiros, Florianópolis, Santa Catarina, Brazil

Received 1 June 2017; accepted 7 April 2018

Available online 25 June 2018

KEYWORDS

Capnography;
Exercise test;
Lung function;
Spirometry

Abstract

Introduction: Spirometry is the most frequently used test to evaluate the progression of lung damage in cystic fibrosis (CF). However, there has been low sensitivity in detecting early lung changes. In this context, our objective was to identify the correlation between parameters of volumetric capnography (VCap) and spirometric parameters during a submaximal treadmill exercise test.

Abbreviations: BMI, body mass index; CF, cystic fibrosis; CFG, group with cystic fibrosis; *CFTR*, cystic fibrosis transmembrane regulator; CG, control group; CO₂, carbon dioxide; ET, expiratory time; EV, expiratory volume; FEV₁, forced expiratory volume in the first second of the FVC; FVC, forced vital capacity; HR, heart rate; IT, inspiratory time; PetCO₂, partial pressure of carbon dioxide in the expired air; RR, respiratory rate; slope 2, slope of phase 2 of the curve of volumetric capnography; slope 2/VT, slope of phase 2 of the curve of volumetric capnography/tidal volume; slope 3, slope of phase 3 of the curve of volumetric capnography; slope 3/PetCO₂, slope of phase 3 of the curve of volumetric capnography/end tidal CO₂; slope 3/VT, slope of phase 3 of the curve of volumetric capnography/expired tidal volume; SpO₂, oxygen saturation; 6-MWT, six-minute walk test; VCap, volumetric capnography; VCO₂, volume of CO₂ exhaled; VD, anatomic dead space volume; VD/VT, anatomic dead space over tidal volume; VT, expired tidal volume; VTalv, alveolar tidal volume.

* Corresponding authors.

E-mail addresses: palomaparazzi@yahoo.com.br (P.L.F. Parazzi), fernandolimamarson@hotmail.com (F.A.L. Marson).

<https://doi.org/10.1016/j.pulmoe.2018.04.006>

2531-0437/© 2018 Sociedade Portuguesa de Pneumologia. Published by Elsevier España, S.L.U. This is an open access article under the CC BY-NC-ND license (<http://creativecommons.org/licenses/by-nc-nd/4.0/>).

Methods: A cross-sectional and controlled study which included 64 patients with CF (CFG) and 64 healthy control subjects (CG) was performed. The CFG was from a university hospital and the CG from local schools. All participants underwent spirometry and VCap before, during and after the submaximal treadmill exercise test. The main variable analyzed by VCap was the slope of phase 3 (slope 3), which indicates the [exhaled carbon dioxide] at the end of expiration, and expresses the heterogeneity of gas emptying in pulmonary periphery. The correlation analysis between spirometry and VCap was conducted using the Spearman correlation test, considering $\alpha = 0.05$.

Results: The indices analyzed by VCap showed correlation with parameters of VCap. Slope 3 showed an inverse correlation with forced expiratory volume in the first second of forced vital capacity (FEV₁) in both groups and at all moments of the submaximal treadmill exercise test. Forced vital capacity (FVC) and FEV₁/FVC ratio showed an inverse correlation with slope 3 only for CFG. Values of slope 3 corrected by the spontaneous tidal volume (VT) and end-tidal carbon dioxide tension (PetCO₂) showed results similar to slope 3 analyzed separately.

Conclusion: Parameters of VCap such as slope 3, slope 3/VT and slope 3/PetCO₂ correlated with sensitive variables of spirometry such as FEV₁, FVC and FEV₁/FVC ratio. For the evaluated variables, there was consistency in the correlation between the two tests, which may indicate the impact of CF on pulmonary physiology.

© 2018 Sociedade Portuguesa de Pneumologia. Published by Elsevier España, S.L.U. This is an open access article under the CC BY-NC-ND license (<http://creativecommons.org/licenses/by-nc-nd/4.0/>).

Introduction

Patients with cystic fibrosis (CF) (OMIM: #219700) from birth, show a progressive deterioration of lung structures,^{1,2} with functional changes that are perpetuated throughout life. These include decreased: peripheral capillary oxygen saturation (SpO₂), the ratio of anatomic dead space and expired tidal volume (VD/VT), forced expiratory volume in one second (FEV₁) and the ability to perform exercise. Moreover, increased respiratory rate (RR), heart rate (HR) and partial pressure of exhaled carbon dioxide (PetCO₂) in arterial blood have been shown.²⁻⁴

Challenges in the management of lung disease in CF include the early detection of lung damage, monitoring of disease progression and the identification and validation of parameters to evaluate response to treatment.⁵⁻⁷ In this context, studies have proposed the use of new markers and instruments, such as clinical scores,⁸ computed tomography,⁶ sputum culture or endotracheal secretion,⁹ lung clearance index,¹⁰ functional tests [six-minute walk test (6-MWT)¹¹ and treadmill tests⁴], transepithelial potential difference,¹² exhaled nitric oxide,¹³ impulse oscillometry,¹⁴ condensed exhaled¹⁵ and volumetric capnography (VCap),^{4,5,7,16} with the latter recently being considered a promising useful tool in the assessment of functional impairment of the lungs.^{4,5,7,16} Also, until now, spirometry has been considered the best lung function test to monitor lung disease progression in CF for more than two decades, but the VCap has emerged as a feasible new tool.^{5-7,16}

The VCap may reflect the increased alveolar heterogeneity with the evolution of lung disease.^{4,5,7,16} The VCap presents a curve from the measurement of the concentration of end tidal CO₂, compared to values measured

simultaneously in expired volumes during a single respiratory cycle, representing an alternative in the search for links between structural damage and functional changes.^{5,16} VCap is a noninvasive, easy to use method, with simple maintenance and low cost.⁴ Also, recently, alterations of the small airways in patients with CF and normal spirometry were detected by VCap showing the feasibility of performing this test early, before severe pulmonary structure changes occur.⁵

The VCap allows calculations of several indices among them the slope of phase 3 (slope 3) and little is known about its behavior during the physical exercise in individuals with CF. Slope 3 is a measure of the gas elimination curve and contains information about the transport of gases in the alveolar airways of the pulmonary periphery, hence the alveolar plateau. In addition, the slope of phase 2 (slope 2) describes the removal of CO₂ from the alveoli, representing the mixture of alveolar gas and VD gas. Thus, slope 2 is determined by the abrupt rise of CO₂ in the exhaled air from the VD.¹⁷ Thus, the VCap reflects disturbances of lung function and may be useful as a non-invasive method of estimating the change in function in many lung diseases.^{4,5,7,16}

The combination of VCap and exercise and the comparison with an already validated technique, such as spirometry, can provide us with valuable information about gas exchange during exercise, as well as, help us understand the limitation of these individuals in activities of daily life.

The scientific community has turned its attention to methods and parameters that may be more sensitive in the early detection of these kinds of lung damage so that they can be combated early. Measurements of gas exchange of various forms during rest have already been obtained. However, the role of physical exercise, as an indicator of prognosis and/or therapeutic instrument, is an area of

research interest in several diseases, particularly respiratory diseases. Physical exercise in CF has been studied as a marker of prognosis or as a tool to improve quality of life, and respiratory morbidity.^{1,3,4}

In this context, the objective of the study was to verify the correlation between VCap parameters during submaximal treadmill exercise test with validated markers of spirometry in patients with CF and healthy controls.

Material and methods

We conducted a cross-sectional and controlled study, which included patients with CF (CFG) from a university hospital and healthy volunteers as a control group (CG). All patients with CF who agreed to participate were included. Those over 18 years of age, and caregivers of minors, signed the consent form, and the study followed the ethical standards of the Helsinki agreement and was approved by the Ethics Committee of the institution (#1182/2009).

Group of patients with cystic fibrosis (CFG)

Inclusion criteria was age between six and 25 years (inclusive). The CF was diagnosed according to international consensus criteria for sweat test (chloride values above 60 mEq/L) and/or the presence of two *CFTR* mutations identified (*cystic fibrosis transmembrane regulator*).¹⁸

The clinical stability was controlled by the use of two clinical scores: Cystic Fibrosis Foundation Clinical Score and Cystic Fibrosis Clinical Score^{8,19,20} and the severity of the disease was classified per the Shwachman–Kulczycki score.²¹ Patients with lung exacerbation were not included. Also, we did not include patients on oxygen therapy. All patients with CF performed the submaximal treadmill exercise test without interruption.

Control group (CG)

The CG included children, adolescents and young healthy adults aged between six to 25 years, randomly selected among students from public and private schools of the same university district. All participants answered a questionnaire about health and none had acute respiratory disease at the time of data collection by clinical evaluation and spirometry markers.

Evaluation procedures

All participants performed sequentially.

Spirometry

Before starting the submaximal treadmill exercise test, the follow anthropometric measurements were conducted: weight (kg), height (cm) and calculation of body mass index (BMI). Next, all subjects underwent spirometry according to the guidelines of the American Thoracic Society.^{22,23} Spirometry was performed using a CPFS/D spirometer (Med-Graphics, Saint Paul, Minnesota, USA; PF BREEZE Software

version 3.8 B for Windows 95/98/NT), and the percentage of predicted values of FEV₁ (FEV₁% predicted), forced vital capacity (FVC% predicted) and the ratio of FEV₁/FVC were analyzed. Spirometry data are shown in percentage of the predicted value according to the Polgar and Promadhat (1971), Pereira et al. (2007) and Duarte et al. (2007) equations.^{23–25}

Volumetric capnography (VCap)

For VCap, a Co2smo Plus[®] DX 8100 Monitor (Novamatrix Medical Systems, Wallingford, CT, USA) was used, which monitored the participants during the submaximal treadmill exercise test. This is a noninvasive monitor with capnography, pulse oximetry and pneumotachography function. The capnography and pneumotachography measures were obtained in real time by analysis of expired gases. The Co2smo Plus[®] was connected to a computer equipped with software to record the flow, volume, pressure, pressure-volume, flow-volume and capnography measurements and curves.

The sensor monitor was connected to a mouthpiece, and a nose clip was used to prevent air escaping. At the end of the collection, an offline sequence of subjects' respiratory cycles was selected for admission to a coefficient of variation for the lowest expired VT of 25% of the current volume of the mean, and the PetCO₂ was admitted to a coefficient of variation less than 10% in millimeters of mercury (mmHg). Respiratory cycles presenting a value of zero in slope 3 were eliminated. The result obtained was the average of the variables during four minutes of monitoring.^{4,5}

The following measures were analyzed:

- i. Slope 3 was calculated using a linear regression curve of CO₂/exhaled volume, measured in millimeters of mercury per liter (mmHg/L).
- ii. VT: volume of air exhaled in one breath, measured in milliliters (mL).
- iii. Slope 2 was calculated using a linear regression curve of CO₂/exhaled volume, measured in mmHg/L.
- iv. RR: measured in breaths per minute.
- v. Volume carbon dioxide (VCO₂): volume of carbon dioxide exhaled in one breath in mL.
- vi. PetCO₂, measured in mmHg.
- vii. VD: volume of air that remains in the conducting airways, measured in mL.
- viii. Alveolar tidal volume (VT_{alv}): VT minus the VD in mL.
- ix. VD/VT ratio.

As the Co2smo Plus[®] monitor has pulse oximetry capability we also collected: (i) HR measured in beats per minute and (ii) SpO₂ measured as a percentage (%).^{4,5}

Submaximal treadmill exercise test

To determine how these variables are affected by exercise and lung disease, the participants walked on a Calo Electronics[®] Pro CL 5004 treadmill for a period of six minutes; with increasing velocity, according to the tolerance of each individual. In this context, aiming at a submaximal test, the participants did not reach full capacity of exercise,

Table 1 Distribution of patients with cystic fibrosis and healthy controls included in the study according to the clinical and laboratory markers.

Marker	Group with cystic fibrosis	Control group	<i>p</i> -value
Gender (male)	32/64	30/64	0.860
Age (years)	12.34 (11.48–13.21) ± 3.47 12 (6–23)	13.51 (12.34–14.68) ± 4.64 11 (9–25)	0.490
Weight (kg)	34.80 (31.47–38.12) ± 13.30 33.75 (12.70–74.20)	46.39 (42.75–50.02) ± 14.44 44 (25.80–87.90)	≤0.001
Height (m)	1.42 (1.37–1.46) ± 0.19 1.45 (1–1.74)	1.52 (1.49–1.56) ± 0.132 1.58 (1.20–1.87)	0.003
Body mass index (kg/m ²)	16.72 (15.93–17.50) ± 3.15 15.87 (11.30–28.63)	19.56 (18.72–20.40) ± 3.33 19.01 (13.46–27.13)	≤0.001
Shwachman-Kulczycki score	77.93 (76.20–79.67) ± 6.94 80 (60–90)	– –	–

kg, kilogram; m, meter. For variables with numeric distribution, the data are described as mean (confidence interval) ± standard deviation; median (minimum to maximum). The difference between groups was calculated by the χ^2 test for categorical variables and by Mann-Whitney test for numerical data considering $\alpha = 0.05$. Positive *p*-values are shown in bold.

choosing the proper exercise intensity at a submaximal level of effort.^{4,26,27}

Just before the start of the submaximal treadmill exercise test, the participant remained at rest for five minutes for the measurement of cardiorespiratory variables, VCap and modified Borg scale (the classification of the subjective perception of effort). Then the submaximal treadmill exercise test began and cardiorespiratory data (RR, HR, SpO₂ and VCap) were measured throughout the submaximal treadmill exercise test by the Co2smo Plus[®].⁴

The exercise was accompanied by verbal stimulus (“you are doing very well; can you go a little faster?”) in the first minute and at the end of each minute. Throughout the activity participants used a nozzle connected to the capnography sensor.

The exercise was based on the 6-MWT and protocols developed for treadmills.^{4,27–31}

The modified Borg scale is an instrument that evaluates the subjective perception of the effort measured by a questionnaire, 0 being no fatigue, up to the value of 10 that indicates exhaustive exhaustion. The scale was applied at rest (before) and immediately after the submaximal exertion test. The Borg scale was applied, only giving the explanation of the association with the perception of effort and that higher numbers represented a worst status. The Borg scale is shown in [Supplementary Material 1](#).

Statistical analysis

Statistical analysis was performed for the CG and CFG at five different times in relation to the exercise: (1) basal; (2) one and two minutes into the test; (3) three and four minutes into the test; (4) five and six minutes into the test and (5) immediately post exercise. To calculate the values from the markers achieved in VCap we used the mean from all the data obtained during the period of the analysis (five different periods of time). We also include the cardiorespiratory adaptation period to promote a complete understanding of the response to two tools used in the submaximal treadmill exercise test performed. The

association of the FVC, FEV₁ and FEV₁/FVC between patients with CF and healthy control subjects was performed by the Mann-Whitney test. Data were processed by the Statistical Package for Social Sciences software version 21.0 (SPSS Inc., Chicago, IL, USA). Correlations between spirometry and VCap were assessed by Spearman correlation test. In the data, the value of the Rho correlation coefficient is indicated. In all analyses, we adopted an alpha value of 0.05.

Results

A total of 128 subjects were evaluated, 64 in each group. There was no statistical difference in age and gender between the groups. Anthropometric variables were lower in CFG for weight, height and BMI compared to CG ([Table 1](#)). Among CFG, the Shwachman-Kulczycki score ranged from 60 to 90 (77.93 ± 6.94) ([Table 1](#)) and the profile of the *CFTR* mutations identified is shown in [Table 2](#). In the modified Borg scale, subjects showed higher values after submaximal treadmill exercise test. The greatest sensation of dyspnea occurred in the CFG (*p*-value < 0.05).

CFG had lower spirometric variables, as a percentage of the predicted value, compared to CG (FVC%: 78.61 ± 20.68 versus 95.78 ± 11.56; FEV₁%: 68.98 ± 22.45 versus 91.94 ± 16.96 and FEV₁/FVC%: 85.66 ± 11.56 versus 98.23 ± 8.95) ([Table 3](#)) (*p*-value < 0.05).

Slope 3 showed a low inverse correlation with FEV₁ in both groups and at all moments of the submaximal treadmill exercise test. The FVC and FEV₁/FVC ratio showed a low inverse correlation with slope 3 only for CFG ([Fig. 1](#)). Values of slope 3 corrected by the spontaneous VT and PetCO₂ showed results like slope 3 analyzed separately ([Figs. 2 and 3](#)).

The complete data for correlations considering the VCap and spirometric markers is shown in [Supplementary Material 2](#). Moreover, the [Fig. 4](#) shows the descriptive analysis of all correlations performed.

Table 2 *CFTR* mutations genotypes of patients with cystic fibrosis enrolled in the study ($n = 64$).

<i>CFTR</i> mutation	N	Percentage (%)	Cumulative percentage
F508del/F508del	22	34.4	34.4
F508del/G542X	7	10.9	45.3
F508del/1812-1G>A	2	3.1	48.4
F508del/c.1717-1G>A	2	3.1	51.5
F508del/N1303K	2	3.1	54.6
3120+1G>A/R1066C	2	3.1	57.7
F508del/2183AA>G	1	1.6	59.3
F508del/R1066C	1	1.6	60.9
F508del/R1162X	1	1.6	62.5
F508del/R553X	1	1.6	64.1
2183AA>G/2183AA>G	1	1.6	65.7
R1162X/R1162X	1	1.6	67.3
F508del/Unknown mutation	8	12.5	79.8
G542X/Unknown mutation	1	1.6	81.4
I507V/Unknown mutation	1	1.6	83
R1162X/Unknown mutation	1	1.6	84.6
Unknown mutation/Unknown mutation	10	15.6	100

CFTR, cystic fibrosis transmembrane regulator; N, number of patients.

Table 3 Descriptive analysis of spirometry variables considering the groups with cystic fibrosis (CFG) and control (CG).

FVC (% predicted)*	CFG	Mean \pm SD	78.60 \pm 20.68
		Median	80.50
		Minimum	32
		Maximum	121
		95% CI	73.44–83.77
	CG	Mean \pm SD	95.78 \pm 11.56
		Median	93
		Minimum	69
		Maximum	130
		95% CI	92.89–98.67
FEV ₁ (% predicted)*	CFG	Mean \pm SD	68.98 \pm 22.45
		Median	65.50
		Minimum	19
		Maximum	117
		95% CI	63.38–74.59
	CG	Mean \pm SD	91.94 \pm 16.96
		Median	90
		Minimum	69
		Maximum	125
		95% CI	87.70–96.17
FEV ₁ /FVC (% predicted)*	CFG	Mean \pm SD	85.66 \pm 11.56
		Median	87.50
		Minimum	52
		Maximum	107
		95% CI	82.77–88.54
	CG	Mean \pm SD	98.23 \pm 8.95
		Median	100
		Minimum	74
		Maximum	125
		95% CI	96–100.47

FVC (% predicted), forced vital capacity; FEV₁ (% predicted), forced expiratory volume in one second; CFG, group with cystic fibrosis; CG, control group. *, p -value < 0.001. The statistical analysis was performed regarding the Mann–Whitney test. $\alpha = 0.05$.

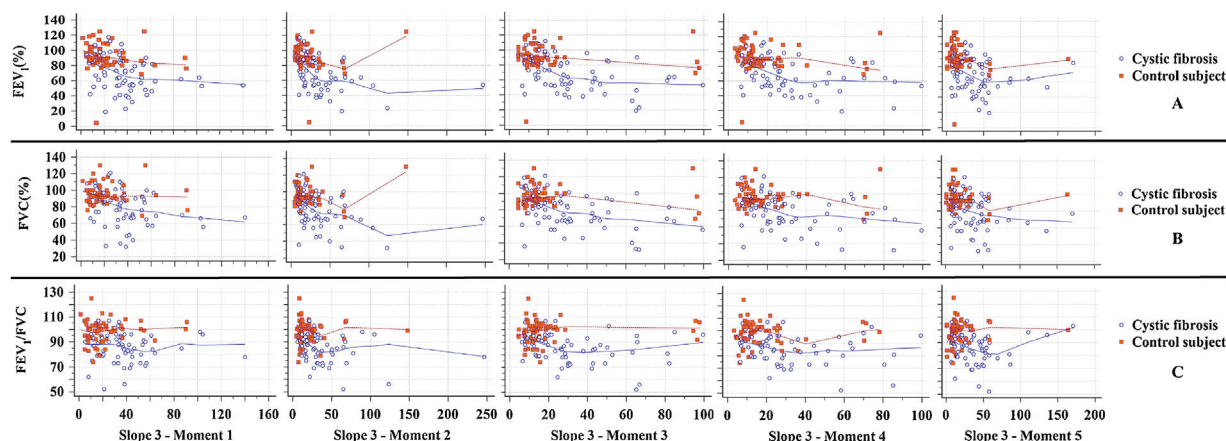


Figure 1 Correlation between slope 3 and spirometry markers. (A) FEV_1 : [All subjects] (Moment 1) $CC = -0.468^{**}$, p -value < 0.001 ; (Moment 2) $CC = -0.501^{**}$, p -value < 0.001 ; (Moment 3) $CC = -0.455^{**}$, p -value < 0.001 ; (Moment 4) $CC = -0.447^{**}$, p -value < 0.001 ; (Moment 5) $CC = -0.445^{**}$, p -value < 0.001 ; [CFG] (Moment 1) $CC = -0.338^{**}$, p -value = 0.006; (Moment 2) $CC = -0.471^{**}$, p -value < 0.001 ; (Moment 3) $CC = -0.462^{**}$, p -value < 0.001 ; (Moment 4) $CC = -0.388^{**}$, p -value = 0.002; (Moment 5) $CC = -0.293^*$, p -value = 0.019; [CG] (Moment 1) $CC = -0.277^*$, p -value = 0.027; (Moment 2) $CC = -0.305^*$, p -value = 0.014; (Moment 3) $CC = -0.124$, p -value = 0.328; (Moment 4) $CC = -0.267^*$, p -value = 0.033; (Moment 5) $CC = -0.245$, p -value = 0.051. (B) FVC: [All subjects] (Moment 1) $CC = -0.376^{**}$, p -value < 0.001 ; (Moment 2) $CC = -0.394^{**}$, p -value < 0.001 ; (Moment 3) $CC = -0.365^{**}$, p -value < 0.001 ; (Moment 4) $CC = -0.359^{**}$, p -value < 0.001 ; (Moment 5) $CC = -0.330$, p -value < 0.001 ; [CFG] (Moment 1) $CC = -0.315^{**}$, p -value = 0.011; (Moment 2) $CC = -0.411^{**}$, p -value = 0.001; (Moment 3) $CC = -0.407^{**}$, p -value = 0.001; (Moment 4) $CC = -0.354^{**}$, p -value = 0.004; (Moment 5) $CC = -0.236$, p -value = 0.061; [CG] (Moment 1) $CC = -0.117$, p -value = 0.359; (Moment 2) $CC = -0.098$, p -value = 0.442; (Moment 3) $CC = 0.098$, p -value = 0.439; (Moment 4) $CC = -0.022$, p -value = 0.861; (Moment 5) $CC = -0.026$, p -value = 0.838. (C) FEV_1/FVC : [All subjects] (Moment 1) $CC = -0.237^{**}$, p -value = 0.007; (Moment 2) $CC = -0.282$, p -value = 0.001; (Moment 3) $CC = -0.294$, p -value = 0.001; (Moment 4) $CC = -0.284$, p -value = 0.001; (Moment 5) $CC = -0.249$, p -value = 0.005; [CFG] (Moment 1) $CC = -0.138$, p -value = 0.276; (Moment 2) $CC = -0.349^{**}$, p -value = 0.005; (Moment 3) $CC = -0.330^{**}$, p -value = 0.008; (Moment 4) $CC = -0.239$, p -value = 0.057; (Moment 5) $CC = -0.220$, p -value = 0.081; [CG] (Moment 1) $CC = 0.064$, p -value = 0.616; (Moment 2) $CC = 0.039$, p -value = 0.758; (Moment 3) $CC = 0.152$, p -value = 0.231; (Moment 4) $CC = 0.063$, p -value = 0.624; (Moment 5) $CC = 0.255^*$, p -value = 0.042. CC, correlation coefficient; FVC, forced vital capacity; FEV_1 , forced expiratory volume in one second; slope 3, slope of phase 3 of capnography; CFG, group with cystic fibrosis ($N = 64$); CG, control group ($N = 64$). All subjects, patients with cystic fibrosis + control subjects ($N = 128$). ** The correlation is significant at the 0.01 level (2 ends). * The correlation is significant at the 0.05 level (2 ends). Alpha = 0.05. Statistical analysis was performed using Spearman correlation (Rho). In the legend is presented the correlation coefficient of Spearman's rank. Data marked with * and ** showed statistically significant p -value.

Discussion

The search for markers with higher sensitivity and specificity to assess the damage and consequences deriving from progression of lung disease in patients with CF has been increasingly encouraged and enhanced. In this context, this seems to be the first study that correlates the prognostic indices of spirometry with promising rates of VCap.

It was noted that all indices analyzing VCap such as slope 3, slope 3/VT and slope 3/PetCO₂ correlated with validated spirometric variables such as FEV_1 , FVC and FEV_1/FVC demonstrating that VCap can identify early minor changes in airways, both at rest and mainly during exercise.

The CF causes progressive deterioration in the ability to perform physical exercise. With the progression of lung disease, the increased VD requires changes in ventilation to maintain adequate alveolar ventilation during exercise, so changes in lung function over time are correlated with changes in exercise capacity.^{3,4,16}

On the other hand, regardless of severity, both children and adults increase the ability to tolerate and benefit from exercise in the long term.^{28,30} Exercise has been used as

a tool to assess improvement or worsening of markers of cardiac function.²⁹⁻³¹

In this sense, VCap, although widely used in clinical practice, is underutilized in relation to HR, probably from ignorance of the results of this clinical tool and its possibilities for practical applications.^{30,31}

Patients with CF are constantly subjected to numerous procedures, some invasive and others which are noninvasive but require patient effort, such as spirometry. VCap comes as a counterproposal requiring minimal patient effort.^{4,5}

Slope 3 is caused by sequential emptying of lung units with different CO₂ concentrations reflecting the heterogeneity of less ventilated areas such as the lung periphery, while FEV_1 reflects the most proximal airway disease.⁵

Ribeiro et al. (2012) by comparing the values of spirometry and VCap noted that patients with CF had higher slope 3/VT ratios, regardless of the lung disease stage, even in those with normal spirometry results, showing that VCap can identify heterogeneity of ventilation distribution in the peripheral airways of patients with CF even with normal spirometry.⁵ In this context, patients with CF require ventilatory increase during exercise caused by poor ventilation of the lungs resulting in heterogeneity between ventilation and

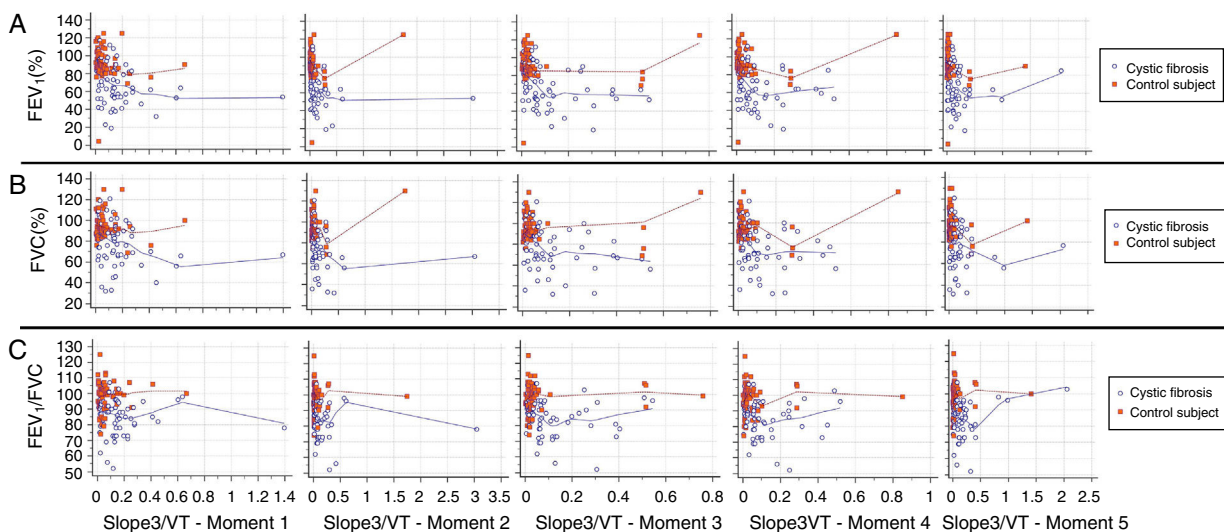


Figure 2 Correlation between slope 3/VT and spirometry markers. (A) FEV₁: [All subjects] (Moment 1) CC = -0.437**, *p*-value < 0.001; (Moment 2) CC = -0.454**, *p*-value < 0.001; (Moment 3) CC = -0.422**, *p*-value < 0.001; (Moment 4) CC = -0.431**, *p*-value < 0.001; (Moment 5) CC = -0.409**, *p*-value < 0.001; [CFG] (Moment 1) CC = -0.273, *p*-value = 0.029; (Moment 2) CC = -0.428**, *p*-value < 0.001; (Moment 3) CC = -0.406**, *p*-value = 0.001; (Moment 4) CC = -0.351**, *p*-value = 0.004; (Moment 5) CC = -0.213, *p*-value = 0.091; [CG] (Moment 1) CC = -0.300*, *p*-value = 0.016; (Moment 2) CC = -0.292*, *p*-value = 0.019; (Moment 3) CC = -0.164, *p*-value = 0.194; (Moment 4) CC = -0.286*, *p*-value = 0.022; (Moment 5) CC = -0.254*, *p*-value = 0.042. (B) FVC: [All subjects] (Moment 1) CC = -0.327**, *p*-value < 0.001; (Moment 2) CC = -0.349**, *p*-value < 0.001; (Moment 3) CC = -0.328**, *p*-value < 0.001; (Moment 4) CC = -0.340**, *p*-value < 0.001; (Moment 5) CC = -0.291**, *p*-value = 0.001; [CFG] (Moment 1) CC = -0.256*, *p*-value = 0.041; (Moment 2) CC = -0.378**, *p*-value = 0.002; (Moment 3) CC = -0.362**, *p*-value = 0.003; (Moment 4) CC = -0.327**, *p*-value = 0.008; (Moment 5) CC = -0.146, *p*-value = 0.250; [CG] (Moment 1) CC = -0.053, *p*-value = 0.675; (Moment 2) CC = -0.068, *p*-value = 0.592; (Moment 3) CC = 0.083, *p*-value = 0.512; (Moment 4) CC = -0.030, *p*-value = 0.811; (Moment 5) CC = -0.032, *p*-value = 0.803. (C) FEV₁/FVC: [All subjects] (Moment 1) CC = -0.201*, *p*-value = 0.023; (Moment 2) CC = 0.206*, *p*-value = 0.020; (Moment 3) CC = -0.232**, *p*-value = 0.008; (Moment 4) CC = -0.213*, *p*-value = 0.016; (Moment 5) CC = -0.209*, *p*-value = 0.018; [CFG] (Moment 1) CC = -0.064, *p*-value = 0.616; (Moment 2) CC = -0.263*, *p*-value = 0.036; (Moment 3) CC = -0.246, *p*-value = 0.051; (Moment 4) CC = -0.168, *p*-value = 0.185; (Moment 5) CC = -0.150, *p*-value = 0.236; [CG] (Moment 1) CC = 0.049, *p*-value = 0.699; (Moment 2) CC = 0.110, *p*-value = 0.385; (Moment 3) CC = 0.199, *p*-value = 0.115; (Moment 4) CC = 0.131, *p*-value = 0.304; (Moment 5) CC = 0.259*, *p*-value = 0.039. CC, correlation coefficient; FVC, forced vital capacity; FEV₁, forced expiratory volume in one second; slope 3/VT, slope of phase 3 normalized by expired tidal volume; CFG, group with cystic fibrosis (*N* = 64); CG, control group (*N* = 64). All subjects, patients with cystic fibrosis + control subjects (*N* = 128). ** The correlation is significant at the 0.01 level (2 ends). * The correlation is significant at the 0.05 level (2 ends). Alpha = 0.05. Statistical analysis was performed using Spearman correlation (Rho). In the legend is presented the correlation coefficient of Spearman's rank. Data marked with * and ** showed statistically significant *p*-value.

perfusion, since certain regions are hypoventilated while others are hyperventilated.^{32-34,7}

Finally, the spirometry and VCap represents different aspects/elements related to lung function [(spirometry) mainly airway obstruction; (VCap) alveolar ventilation heterogeneity and ventilation/perfusion] and this fact can be visualized by the low correlation coefficients observed in our sample between the two tools. The lung is a complex organ and numerous tools should be used, at the same time, to perform a wide diagnostic of the lung disease – one tool is a complement to another tool.

As a study limitation, VCap reference values were not available in the literature, so we developed a curve of healthy subject values for VCap, as well as, the association regarding age and sex (e.g., these data can be done to spirometry, but the same is not true to VCap). Also, we are not able to perform multiple linear regression procedure regarding the low number of patients with CF and healthy control subjects enrolled and the correlation analysis providing a number that summarizes the degree of

linear relationship between the two variables (spirometry and VCap). Also, the regression analysis provides an equation that describes the behavior of one of the variables as a function of the behavior of the other variable, which is not known in VCap. Thus, to date, knowledge about the cause and effect factor between both tools is limited and the markers of each tool appear to reflect on different phenotypic anomalies of the disease. Thus, in this first step, we believe that the interpretation, even with caution, of the correlation, and later on the regression, is more relevant. In addition, the interpretation of the results with low coefficient correlations and the limits of linear regression method that informs on the intensity of the liaison between two variables is limited, and new studies should be done to prove our findings. But, VCap tracking and monitoring of lung function in patients with CF may be a promising parameter. Also, follow-up studies may show more evidence of the effectiveness of the management of VCap in CF and other diseases. In addition, the VCap shows some limitations in discriminating the severity of the small airways alteration

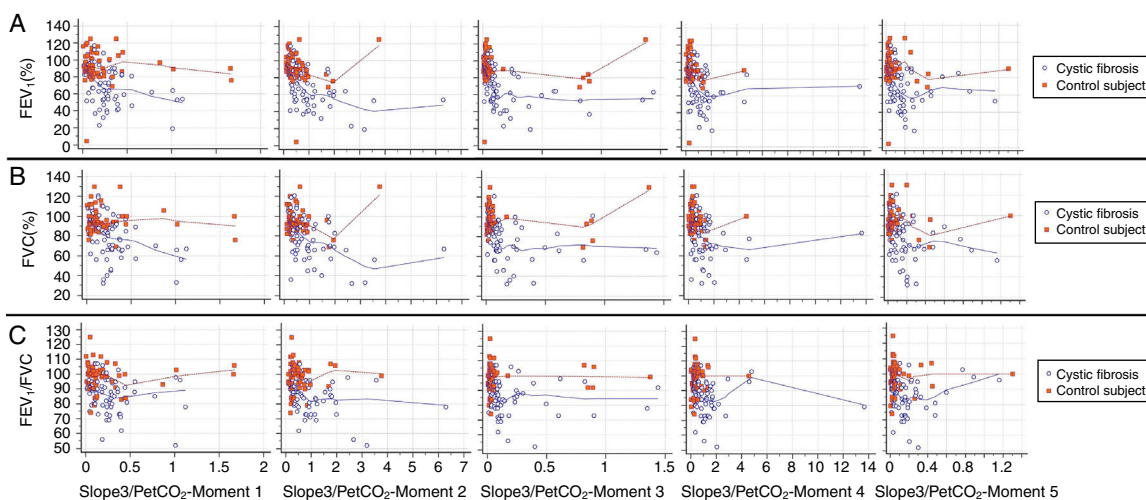


Figure 3 Correlation between slope 3/PetCO₂ and spirometry markers. (A) FEV₁: [All subjects] (Moment 1) CC = -0.384**, *p*-value < 0.001; (Moment 2) CC = -0.525**, *p*-value < 0.001; (Moment 3) CC = -0.512**, *p*-value < 0.001; (Moment 4) CC = -0.463**, *p*-value < 0.001; (Moment 5) CC = -0.431**, *p*-value < 0.001; [CFG] (Moment 1) CC = -0.351**, *p*-value = 0.005; (Moment 2) CC = -0.499**, *p*-value < 0.001; (Moment 3) CC = -0.503, *p*-value < 0.001; (Moment 4) CC = -0.280, *p*-value = 0.025; (Moment 5) CC = -0.353**, *p*-value = 0.004; [CG] (Moment 1) CC = -0.093, *p*-value = 0.467; (Moment 2) CC = -0.313*, *p*-value = 0.012; (Moment 3) CC = -0.173, *p*-value = 0.172; (Moment 4) CC = -0.239, *p*-value = 0.058; (Moment 5) CC = -0.156, *p*-value = 0.219. B. FVC: [All subjects] (Moment 1) CC = -0.336**, *p*-value < 0.001; (Moment 2) CC = -0.435**, *p*-value < 0.001; (Moment 3) CC = -0.409**, *p*-value < 0.001; (Moment 4) CC = -0.361**, *p*-value < 0.001; (Moment 5) CC = -0.342**, *p*-value < 0.001; [CFG] (Moment 1) CC = 0.341**, *p*-value = 0.006; (Moment 2) CC = -0.457**, *p*-value < 0.001; (Moment 3) CC = -0.438, *p*-value < 0.001; (Moment 4) CC = -0.238, *p*-value = 0.058; (Moment 5) CC = -0.327**, *p*-value = 0.008; [CG] (Moment 1) CC = 0.036, *p*-value = 0.780; (Moment 2) CC = -0.131, *p*-value = 0.302; (Moment 3) CC = 0.066, *p*-value = 0.603; (Moment 4) CC = -0.044, *p*-value = 0.730; (Moment 5) CC = 0.044, *p*-value = 0.727. C. FEV₁/FVC: [All subjects] (Moment 1) CC = -0.292**, *p*-value = 0.001; (Moment 2) CC = -0.298**, *p*-value = 0.001; (Moment 3) CC = -0.289**, *p*-value = 0.001; (Moment 4) CC = -0.275**, *p*-value = 0.002; (Moment 5) CC = -0.252**, *p*-value = 0.004; [CFG] (Moment 1) CC = -0.177, *p*-value = 0.162; (Moment 2) CC = -0.346**, *p*-value = 0.005; (Moment 3) CC = -0.228, *p*-value = 0.070; (Moment 4) CC = -0.230, *p*-value = 0.068; (Moment 5) CC = -0.134, *p*-value = 0.290; [CG] (Moment 1) CC = -0.119, *p*-value = 0.349; (Moment 2) CC = 0.077, *p*-value = 0.543; (Moment 3) CC = 0.092, *p*-value = 0.471; (Moment 4) CC = 0.278*, *p*-value = 0.026; (Moment 5) CC = 0.133, *p*-value = 0.293. CC, correlation coefficient; FVC, forced vital capacity; FEV₁, forced expiratory volume in one second; slope 3/PetCO₂, slope of phase 3 normalized by end-tidal carbon dioxide tension; CFG, group with cystic fibrosis (*N* = 64); CG, control group (*N* = 64). All subjects, patients with cystic fibrosis + control subjects (*N* = 128). ** The correlation is significant at the 0.01 level (2 ends). * The correlation is significant at the 0.05 level (2 ends). Alpha = 0.05. Statistical analysis was performed using Spearman correlation (Rho). In the legend is presented the correlation coefficient of Spearman's rank. Data marked with * and ** showed statistically significant *p*-value.

and it may be worth exploring another index to describe these alterations. In this way, studies should be performed including several indexes achieved from VCap, as well, the comparison between it and some lung function methods.

Although VCap is a tool used mainly for monitoring critically ill and mechanically ventilated subjects, it has been proven to be a valuable tool in the evaluation of patients with CF before and during the exercise. The VCap differences and advantages include the lack of need for forced breathing maneuvers and, unlike spirometry, the possible elimination of bias such as patient effort, technical expertise and reference equations.

Conclusion

The VCap indices had low correlation with parameter already validated in spirometry during submaximal treadmill exercise test such as FEV₁, FVC and FEV₁/FVC demonstrating

that VCap is a useful tool for evaluating the pulmonary status of children and adolescents with CF being a complementary tool – spirometry (airway obstruction) and VCap (alveolar ventilation heterogeneity and ventilation/perfusion) methods do not assess the same element. The use of VCap and application associated with physical exercise provides information about respiratory behavior during this activity in these subjects, and the presence of obstruction, even in patients with unchanged FEV₁.

Ethical approval

The study followed the ethical standards of the Helsinki agreement and was approved by the Ethics Committee of the institution (#1182/2009).

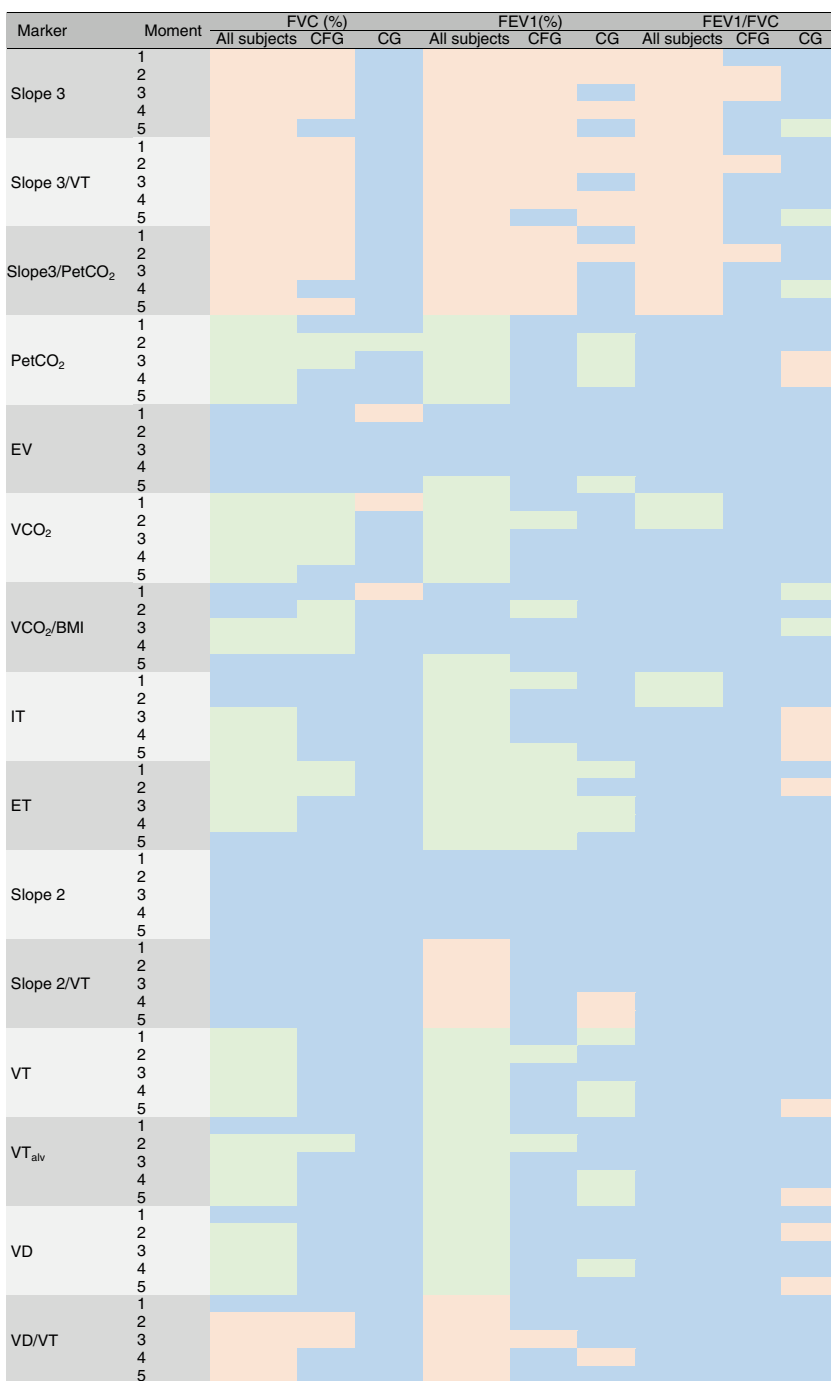


Figure 4 Descriptive overview of correlations between variables obtained from spirometry and volumetric capnography. * G, groups; M, moments; 1, baseline time of the submaximal treadmill exercise test; 2, first and second minutes of the submaximal treadmill exercise test; 3, third and fourth minutes of the submaximal treadmill exercise test; 4, last two minutes of the submaximal treadmill exercise test; 5, measurement after the submaximal treadmill exercise test; CFG, cystic fibrosis group; CG, control group; All subjects, patients with cystic fibrosis + control subjects; IT, inspiratory time; ET, expiratory time; VT, expired tidal volume; VT_{alv}, alveolar tidal volume; VD, anatomic dead space volume; slope 3, slope of phase 3 of capnography; slope 3/VT, slope of phase 3 normalized by VT; slope 3/PetCO₂, slope of phase 3 normalized by partial pressure of carbon dioxide in the expired air; slope 2, slope of phase 2 of capnography; slope 2/VT, slope of phase 2 normalized by VT; VCO₂, fraction of expired CO₂; BMI, body mass index; FVC, forced vital capacity; FEV₁, forced expiratory volume in one second; PetCO₂, partial pressure of carbon dioxide in the expired air; EV, expiratory volume. Statistical analysis was performed using Spearman correlation (Rho). Blue, no correlation was observed; red, negative correlation was observed; green, positive correlation was observed.

Funding information

Paloma L.F. Parazzi: Conselho Nacional de Pesquisa e Desenvolvimento Científico e Tecnológico (CNPq); Fernando A.L. Marson: Fundação de Amparo à Pesquisa do Estado de São Paulo (FAPESP) for the studies #2011/12939-4 and #2015/12858-5; Fundo de Apoio à Pesquisa ao Ensino e à Extensão da Universidade Estadual de Campinas for the study #0648/2015; José D. Ribeiro: FAPESP for the study #2011/18845-1 and #2015/12183-8.

Authors' contribution

PLFP, FALM, MAGOR, CISS, JDR – made substantial contributions to conception and design, acquisition of data, or analysis and interpretation of data; involved in drafting the manuscript and revising it critically for important intellectual content; gave final approval of the manuscript version to be published; and agreed to be accountable for all aspects of the work in ensuring that questions related to the accuracy or integrity of any part of the work were appropriately investigated and resolved.

Conflicts of interest

The authors declare that there is no conflict of interest.

Acknowledgments

The authors thank all who participated as subjects in this study and in a way contributed to its completion.

Appendix A. Supplementary material

Supplementary data associated with this article can be found in the online version at [doi:10.1016/j.pulmoe.2018.04.006](https://doi.org/10.1016/j.pulmoe.2018.04.006).

References

- Rand S, Prasad AS. Exercise as part of a cystic fibrosis therapeutic routine. *Expert Rev Respir Med.* 2012;6:341–52.
- Flume PA, Devanter DRV. State of progress in treating cystic fibrosis respiratory disease. *BMC Med.* 2012;10:2–12.
- Saynor ZL, Barker AR, Oades PJ, Williams CA. Impaired aerobic function in subjects with cystic fibrosis during ramp exercise. *Med Sci Sports Exerc.* 2014;46:2271–8.
- Parazzi PL, Marson FAL, Ribeiro MA, de Almeida CC, Martins LC, Paschoal IA, et al. Ventilatory abnormalities in subjects with cystic fibrosis undergoing the submaximal treadmill exercise test. *BMC Pulm Med.* 2015;15:63.
- Ribeiro MAGO, Silva MT, Ribeiro JD, Moreira MM, Almeida CC, Almeida-Junior AA, et al. Volumetric capnography as a tool to detect early peripheral lung obstruction in cystic fibrosis subjects. *J Pediatr.* 2012;88:509–17.
- Stahr CS, Samarage CR, Donnelley M, Farrow N, Morgan KS, Zosky G, et al. Quantification of heterogeneity in lung disease with image-based pulmonary function testing. *Sci Rep.* 2016;6:29438.
- Fuchs SI, Junge S, Ellemunter H, Ballmann M, Gappa M. Calculation of the capnographic index based on expiratory molar mass-volume-curves—a suitable tool to screen for cystic fibrosis lung disease. *J Cyst Fibros.* 2013;12:277–83.
- Feiten TS, Flores JS, Farias BL, Rovedder PM, Camargo EG, Dalcin Pde T, et al. Respiratory therapy: a problem among children and adolescents with cystic fibrosis. *J Bras Pneumol.* 2016;42:29–34.
- Greipel L, Fischer S, Klockgether J, Dorda M, Mielke S, Wiehlmann L, et al. Molecular epidemiology of mutations in antimicrobial resistance loci of *Pseudomonas aeruginosa* isolates from cystic fibrosis airways. *Antimicrob Agents Chemother.* 2016;60:6726–34.
- Stahl M, Wielpütz MO, Graeber SY, Joachim C, Sommerburg O, Kauczor HU, et al. Comparison of lung clearance index and magnetic resonance imaging for assessment of lung disease in children with cystic fibrosis. *Am J Respir Crit Care Med.* 2017;195:349–59.
- Saglam M, Vardar-Yagli N, Savci S, Inal-Ince D, Aribas Z, Bosnak-Guclu M, et al. A comparison of the six-minute walk and incremental shuttle walk tests in CF. *Pediatr Int.* 2016;58:887–93.
- Cunha MF, Simonin J, Sassi A, Freund R, Hatton A, Cottart CH, et al. Analysis of nasal potential in murine cystic fibrosis models. *Int J Biochem Cell Biol.* 2016;80:87–97.
- Maniscalco M, Bianco A, Mazzarella G, Motta A. Recent advances on nitric oxide in the upper airways. *Curr Med Chem.* 2016;23:2736–45.
- Sakarya A, Uyan ZS, Baydemir C, Anık Y, Erdem E, Gokdemir Y, et al. Evaluation of children with cystic fibrosis by impulse oscillometry when stable and at exacerbation. *Pediatr Pulmonol.* 2016;51:1151–8.
- Effros RM, Su J, Casaburi R, Shaker R, Biller J, Dunning M. Utility of exhaled breath condensates in chronic obstructive pulmonary disease: a critical review. *Curr Opin Pulm Med.* 2005;11:135–9.
- Veronez L, Moreira MM, Soares ST, Pereira MC, Ribeiro MA, Ribeiro JD, et al. Volumetric capnography for the evaluation of pulmonary disease in adult subjects with cystic fibrosis and noncystic fibrosis bronchiectasis. *Lung.* 2010;188:263–8.
- Veronez L, Pereira MC, da Silva SM, Barcaui LA, De Capitani EM, Moreira MM, et al. Volumetric capnography for the evaluation of chronic airways diseases. *Int J Chron Obstruct Pulmon Dis.* 2014;9:983–9.
- Farrell PM, White TB, Ren CL, Hempstead SE, Accurso F, Derichs N, et al. Diagnosis of cystic fibrosis: consensus guidelines from the cystic fibrosis foundation. *J Pediatr.* 2017;181S: S4–15, e1.
- CFF, Cystic Fibrosis Foundation. Patient Registry 2002 annual data report. Bethesda, MD: Patient Registry; 2002.
- Kanga J, Kuhn R, Craigmyle, Haverstock D, Church D. Cystic fibrosis clinical score: a new scoring system to evaluate acute pulmonary exacerbation. *Clin Ther.* 1999;21:1343–56.
- Stollar F, Adde FV, Cunha MT, Leone C, Rodrigues JC. Shwachman-Kulczycki score still useful to monitor cystic fibrosis severity. *Clinics.* 2011;66:979–83.
- Melia U, Burgos F, Vallverdú M, Velickovski F, Lluç-Ariet M, Roca J, et al. Algorithm for automatic forced spirometry quality assessment: technological developments. *PLOS ONE.* 2014;9:e116238.
- Pereira CA, Sato T, Rodrigues SC. New reference values for forced spirometry in white adults in Brazil. *J Bras Pneumol.* 2007;33:397–406.
- Polgar G, Promadhat V. Pulmonary function testing in children: techniques and standards. Philadelphia: WB Saunders Company; 1971.
- Duarte AA, Pereira CA, Rodrigues SC. Validation of new Brazilian predicted values for forced spirometry in Caucasians

- and comparison with predicted values obtained using other reference equations. *J Bras Pneumol.* 2007;33:527–35.
26. ATS – American Thoracic Society ATS Statement: guidelines for the six-minute walk test. *Am J Respir Crit Care Med.* 2002;166:111–7.
 27. Morales-Blanhir JE, Vidal CDP, Romero MJR, Castro MMG, Villegas AL, Zamboni M. Six-minute walk test: a valuable tool for assessing pulmonary impairment. *J Bras Pneumol.* 2011;37:110–7.
 28. Williams CA, Saynor ZL, Tomlinson OW, Barker AR. Cystic fibrosis and physiological responses to exercise. *Expert Rev Respir Med.* 2014;8:751–62.
 29. Lafortuna CL, Lazzer S, Agosti F, Busti C, Galli R, Mazzilli G, et al. Metabolic responses to submaximal treadmill walking and cycle ergometer pedalling in obese adolescents. *Scand J Med Sci Sports.* 2010;20:630–7.
 30. Nemeth BA, Carrel AL, Eickhoff J, Clark RR, Peterson SE, Allen DB. Submaximal treadmill test predicts VO_2 max in overweight children. *J Pediatr.* 2009;154:677–81.
 31. Labadessa IG, Arcuri JF, Sentanin AC, da Costa JN, Pessoa BV, Di Lorenzo VA. Should the 6-minute walk test be compared when conducted by 2 different assessors in subjects with COPD? *Respir Care.* 2016;61:1323–30.
 32. Leroy S, Perez T, Neviere R, Aguilaniu B, Wallaert B. Determinants of dyspnea and alveolar hypoventilation during exercise in cystic fibrosis: Impact of inspiratory muscle endurance. *J Cyst Fibros.* 2011;10:159–65.
 33. Pianosi P, Hochman J. End-tidal estimates of arterial PCO_2 for cardiac output measurement by CO_2 rebreathing: a study in subjects with cystic fibrosis and healthy controls. *Pediatr Pulmonol.* 1996;22:154–60.
 34. Paranjape SM, Barnes LA, Carson KA, von Berg K, Loosen H, Mogayzel PJ Jr. Exercise improves lung function and habitual activity in children with cystic fibrosis. *J Cyst Fibros.* 2012;11:18–23.